

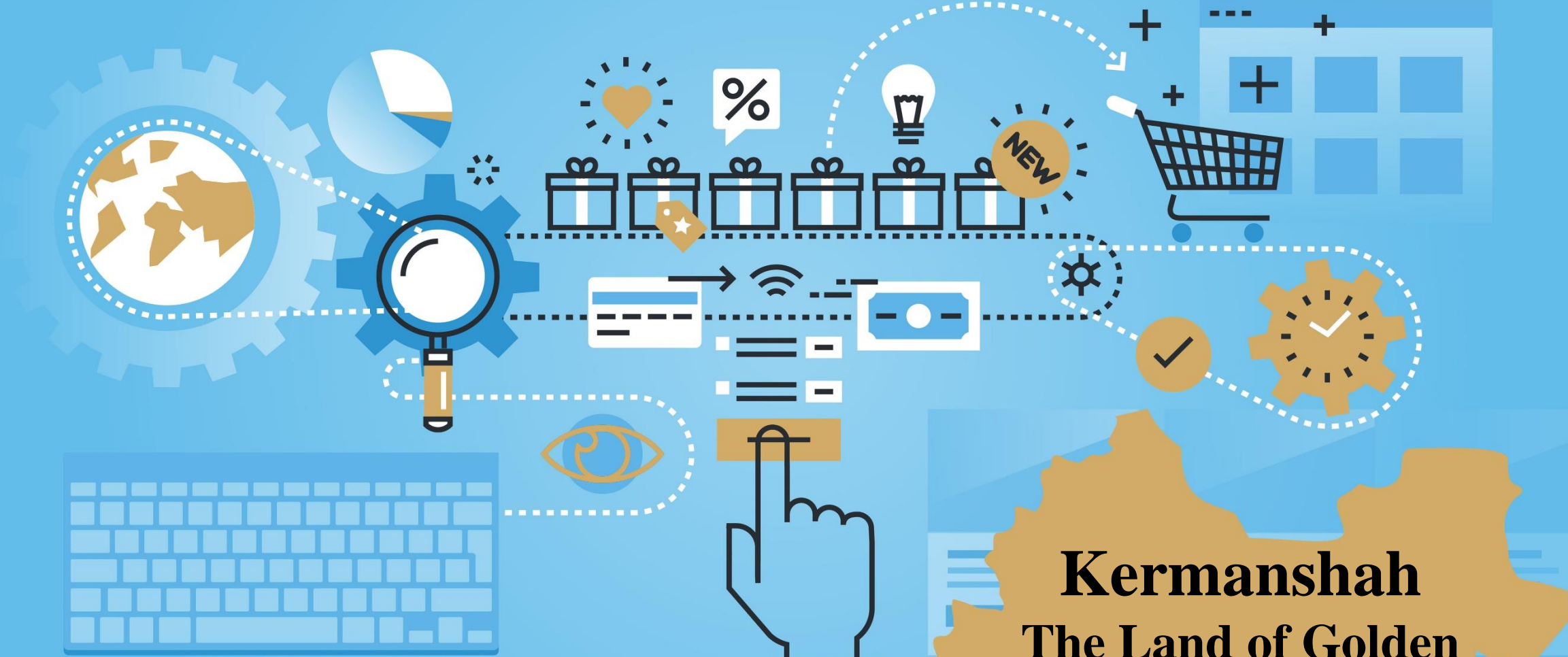


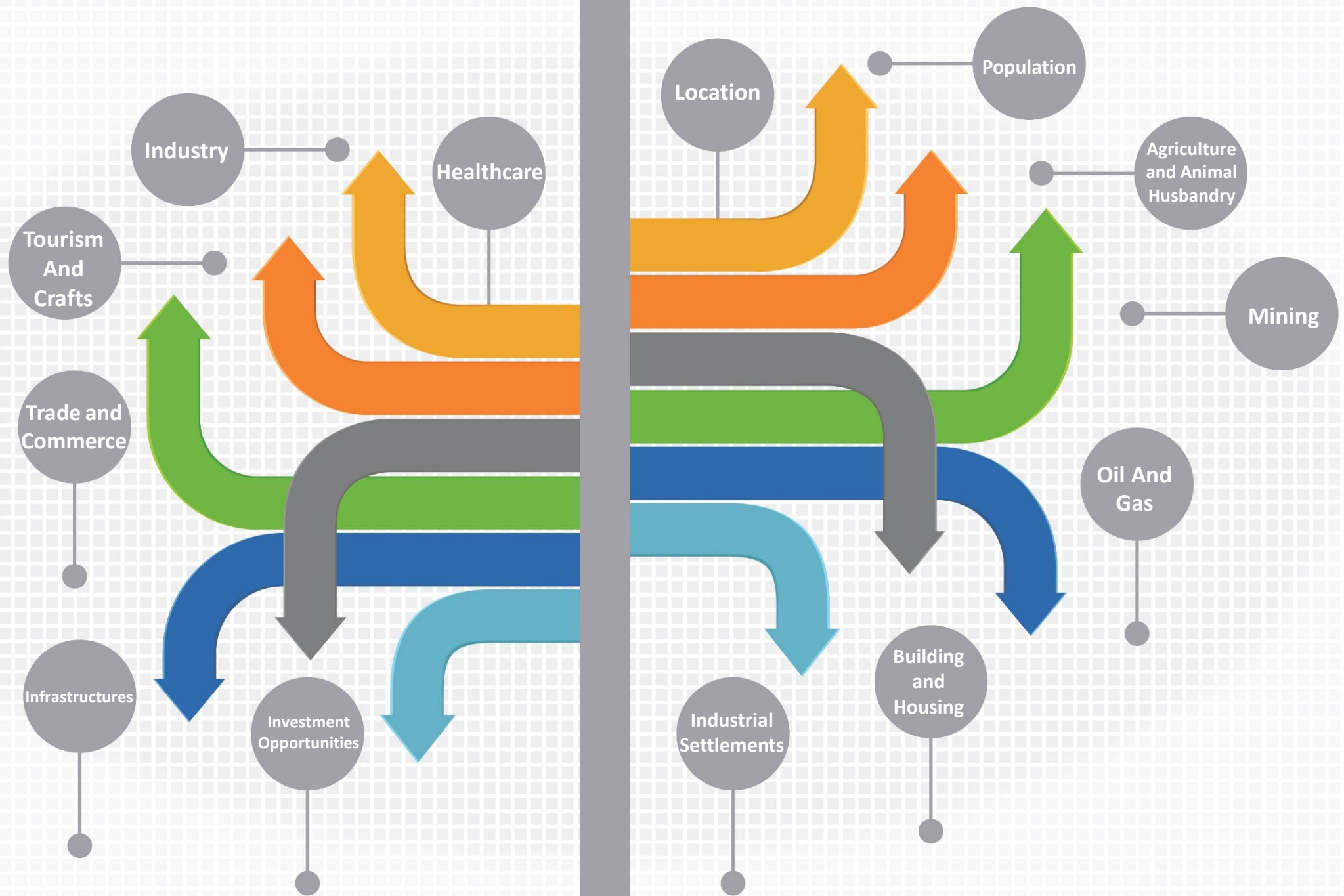
*Kermanshah Chamber Of Commerce,
Industries , Mines & Agriculture*



Kermanshah

The Land of Golden Opportunities

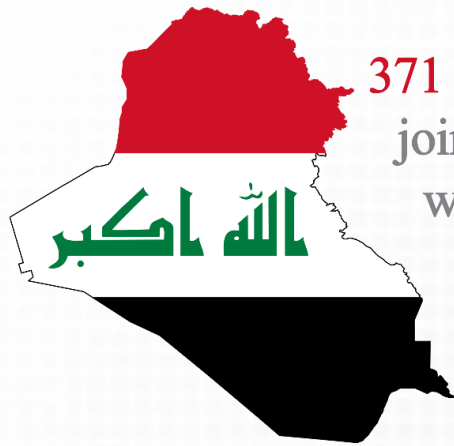




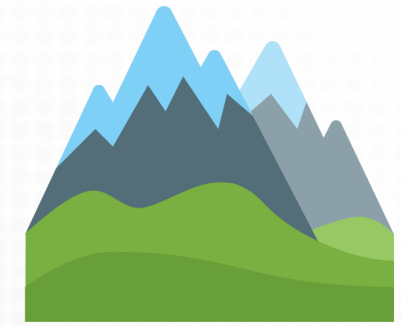
Location of Kermanshah Province



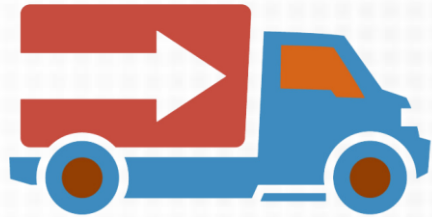
[Return to Main Menu](#)



371 kilometer
joint border
with Iraq



Kermanshah province is located in the
mountainous region with an area of 25,900
square kilometer in the west of the Iran



In the main route of transit of
goods and services to Iraq and
in the main route of Atabat Aliat
(Karbala and Najaf Ashraf)



It has
14 towns
35 cities
32 districts
87 rural districts
3148 villages



14 towns of
Kermanshah
province
respectively area



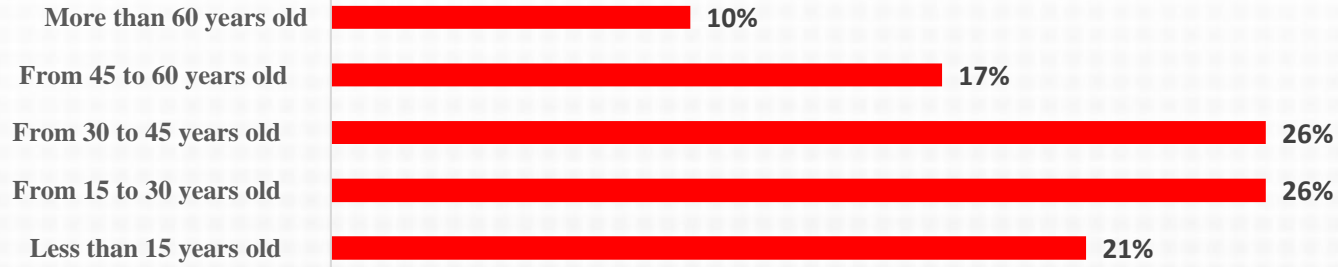
[Return to Main Menu](#)

Population



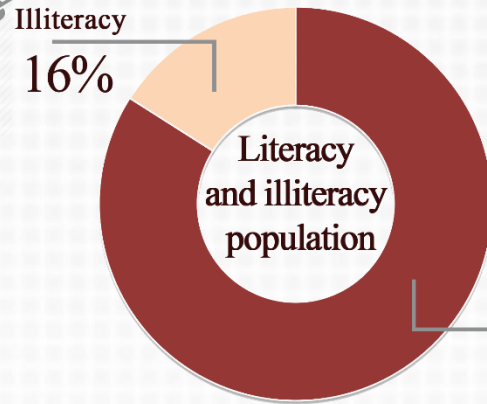
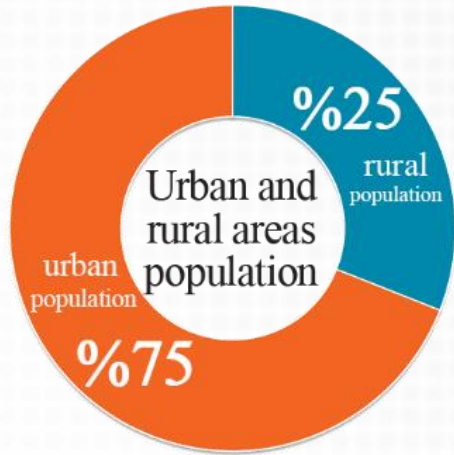
[Return to Main Menu](#)

47.4%
of the
population
of
Kermanshah
province
are **active**

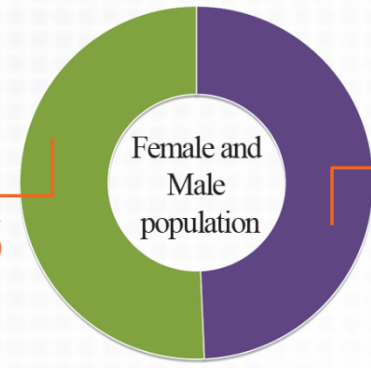


1/95
million

Total
population of
Kermanshah
province



50.6%



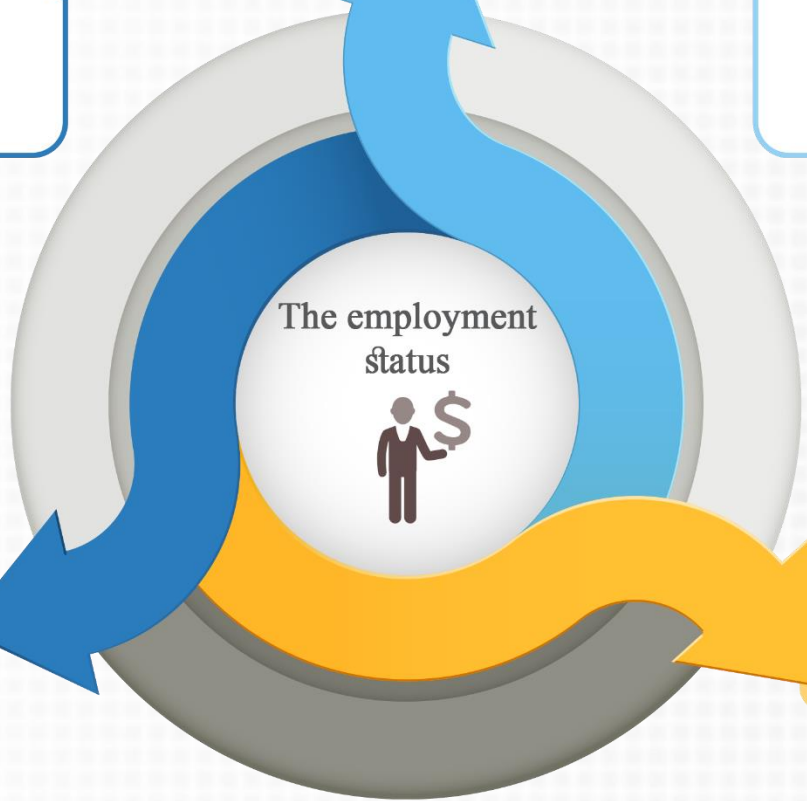
49.4%

[Return to Main Menu](#)

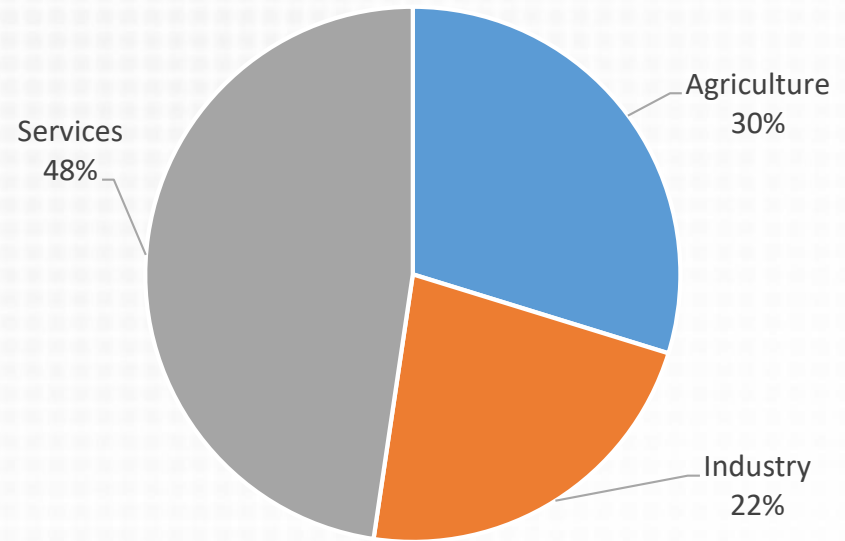


The literate working population: %88.4


The illiterate working population: %11.6



The employment in major economic sectors




[Return to Main Menu](#)





Agriculture and Animal husbandry

[Return to Main Menu](#)



Due to the favorable environmental conditions and fertile lands, the province has high abilities in different fields of **agriculture, horticulture, animal husbandry (livestock, poultry and bee) and aquaculture.**


Total province production: 5 Million tons

Cool climatic zones:
Kangavar, Songhor, Paveh, Javanrood and parts of Salas-e- Babajani

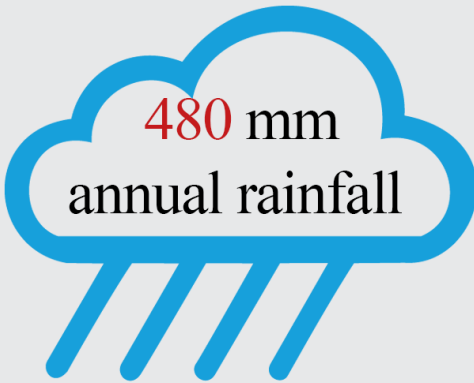
Tropical climatic zones:
Ghasr-e -Shirin , Somar, Sarpol-e -Zahab and Gilan-e Gharb

Temperate climatic zones:
Kermansha , Eslam-abad-e-Gharb, Sahneh, Ravansar, Harsin and parts of Dalahoo



A province with four seasons

With three cool, tropical and temperate climatic zones and 7 specific agricultural climates



480 mm annual rainfall

Twice the country average



75% of lands are dry farmland



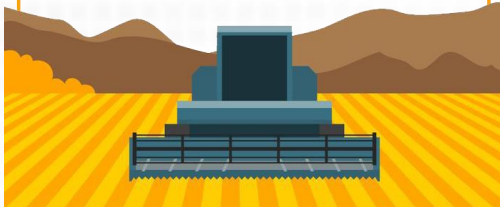
4% Gardens and Land



96% Farmland

960 thousands hectares Kermanshah Agricultural Land Level

5% of total agricultural lands of Iran



[Return to Main Menu](#)



Paveh Organic Town

[Return to Main Menu](#)

Suger beet, wheat, barley, beans, nucleated fruits and animal husbandry

Eslamabad-e Gharb

Corn, beans, vegetable and fruits (tomato, cucumber and potato) nucleated fruits and animal husbandry

Sarpol-e Zahab

Vegetable and fruits, citrus and fisheries

Ghasr-e Shirin

Nucleated, grainy and dried fruits and animal husbandry

Javanrood

Grainy and dried fruits, pomegranate and fishery

Paveh

wheat, oil seeds, barley, forage, vegetables, nucleated, grainy and dried fruits, medicinal plants, fishery and animal husbandry

Kangavar

Wheat, grainy and dried fruits (apple) and animal husbandry

Salas-e Babajani

Wheat, corn, barley, sugar beets, beans, nucleated fruits, grainy fruits, vegetable and fruits, animal husbandry and beekeeping

Kermanshah

wheat, beans, nucleated and grainy fruits, animal husbandry and fishery

Dalahoo

wheat, forage, animal husbandry and grainy fruits

Gilan-e Gharb

wheat, sunflower, beans, forage, nucleated and grainy fruits and animal husbandry

Songhor

wheat, corn, rapeseeds, barley, grainy fruits, vegetable and fruits and animal husbandry

Ravansar

sugar beets, barley, vegetable and fruits, nucleated and grainy fruits, dried fruits, medicinal plants, animal husbandry and beekeeping

Sahneh

wheat, corn, sugar beet, forage, beans, vegetable and fruits (potatoes and onions), nucleated, grainy and dried fruits, medicinal plants, animal husbandry and


Harseen

Every city's major products

1 The **first place**, in terms of the level and production of **chickpeas**, in the country



2 The **second place**, in terms of the level and production of **barley**, in the country



3 **Third** in terms of level and production of **corn** in the country



4 The **fourth place**, in terms of the level and production of **sugar beet**, in the country



4 The **fourth place**, in terms of the level and production of **rapeseed**, in the country



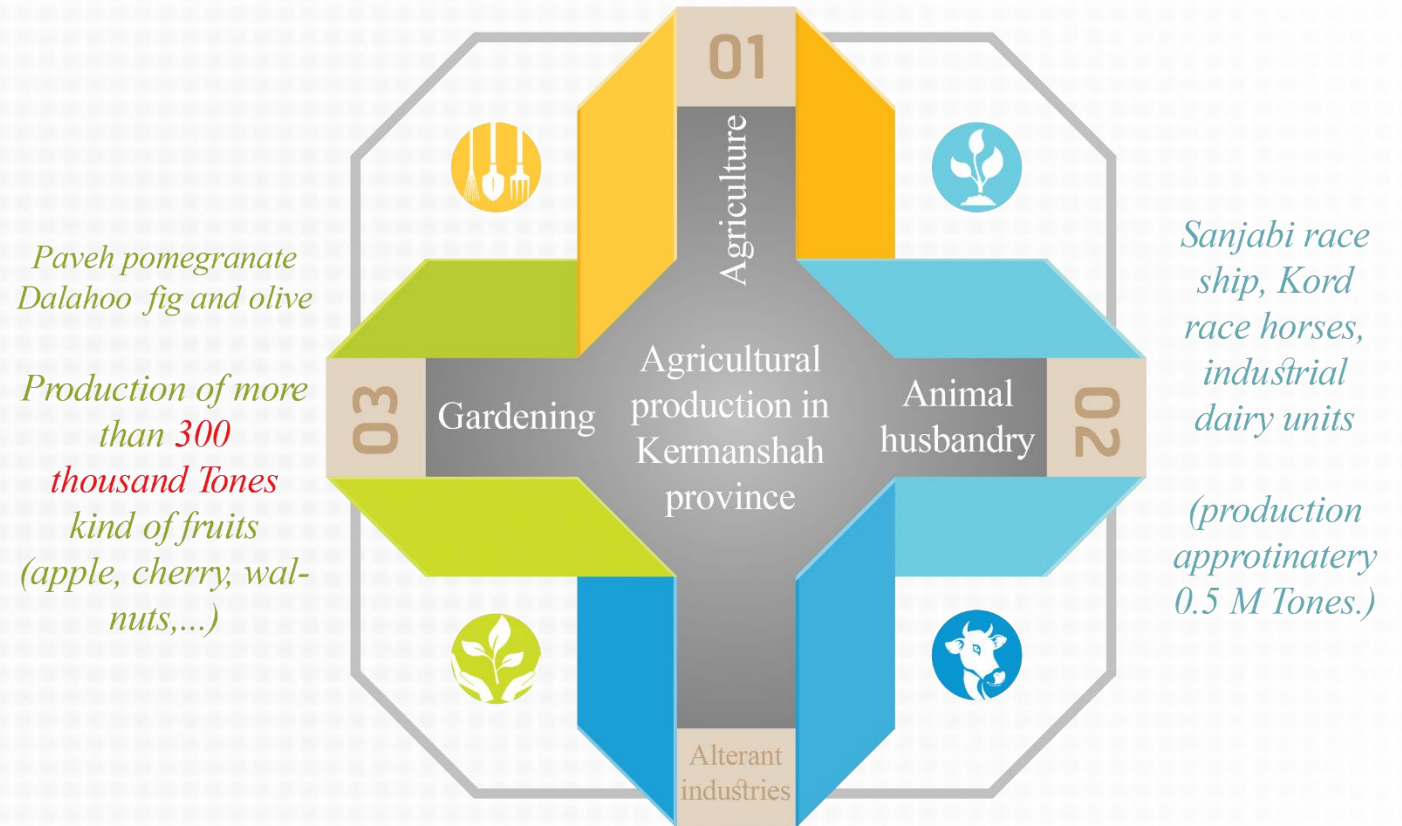
4 The **fourth place**, in terms of the level and production of **wheat**, in the country



1 Ranked the **first** in the country, in terms of performance in **sugar beet and corn** units



Production of 4.2 Million Tones of wheat, barley, peas, corn, sugar beet, rapeseed and sunflower (Songhori Seeds)



Existence of large factories of an iterant industries:

Rojin Tak Company (tomato paste production), Nazgol Company (oiling the oil seeds), corn cultivation development company (corn hybrid seed production), disinfecting units for wheat and barley seeds, production units of livestock and poultry feed, poultry slaughterhouse units, corn drying units and ...

[Return to Main Menu](#)



Mining

[Return to Main Menu](#)



Kermanshah mining situation

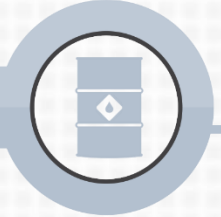


The country's **first rank** in term of reserves of bitumens



Highest number of extraction and mines belong to **limestone**
The **highest** income from value added tax in the province

20 mines of limestone with approximately 395246 billion Rials value added.



Harseen Marble
Globally Known



Number of mines
61 in operation
Employees: **664** person



99% of mining belongs to private sector

[Return to Main Menu](#)



Quantity and value of mineral productions of mines in operation by activity

Mine name	Production amount (thousand tons)	Production value (million Rials)
Sand and ballast extraction	188000	19160
Extraction of decorative stones	212625	207188
Extraction of carcass (offal) stones	445000	22925
Extraction of ballast stone	0	0
Extraction of limestone	4392194	501839
Extraction of gypsum	158778	25666
Extraction of red and yellow soil	3000	900
Extraction of natural solid bitumen	39489	80044
Extraction of silica	47000	38550

The total amount of mineral productions in the mines in operation is **5486086 thousand tons** with a production value of **896271 million rials**

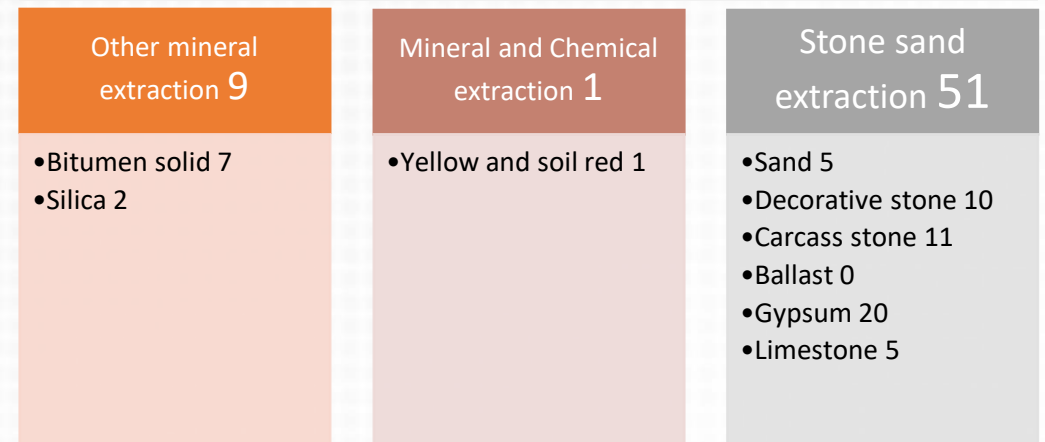


[Return to Main Menu](#)

specification of mines in the province

- 01● *5.5 million tons* Amount of production (*896271 Billion Rials*)
- 02● *Value added 721885 Billion Rials. Investment value 104223 Billion Rials*
- 03● *The number of employees is 664 individuals*
60 mines are managed by the private sector
One mine is managed by the public sector

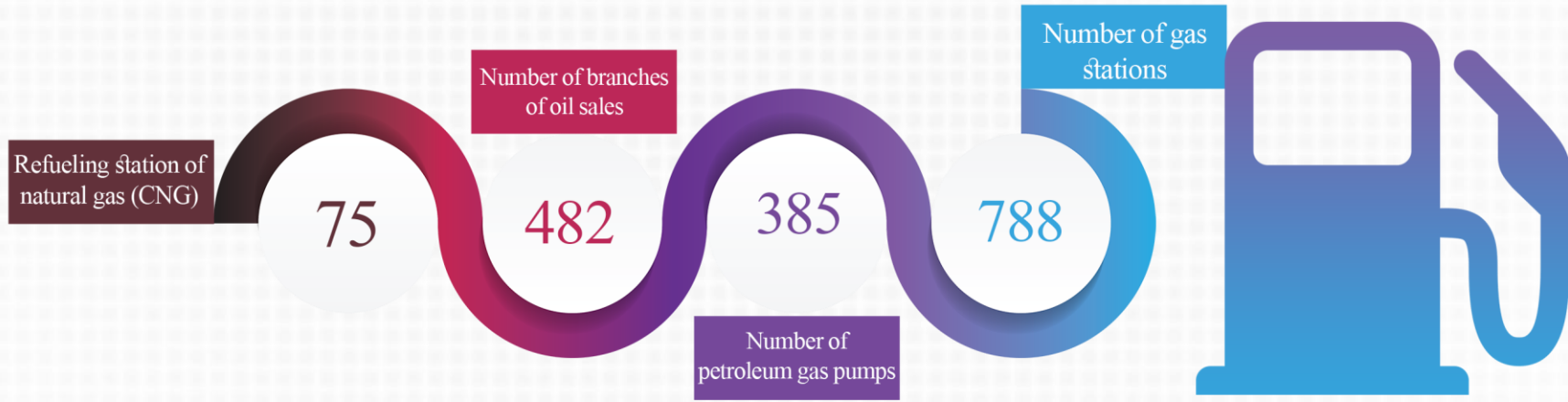
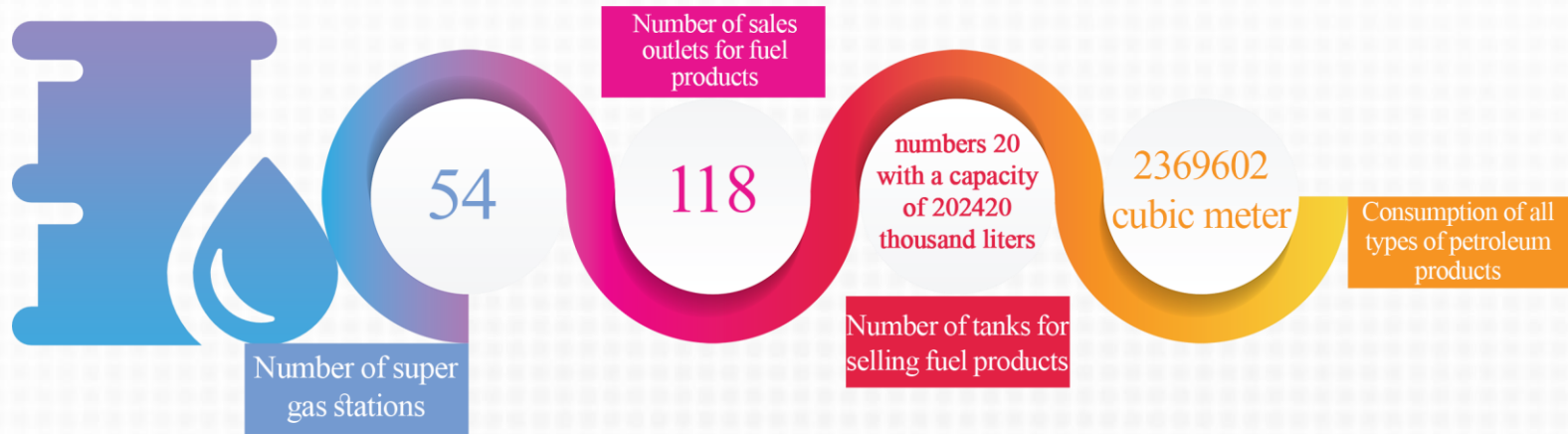
Total number of mines in operation is 61.
(**58** hypaethral mines and **3** underground and hypaethral extraction mines)



Oil And Gas

[Return to Main Menu](#)

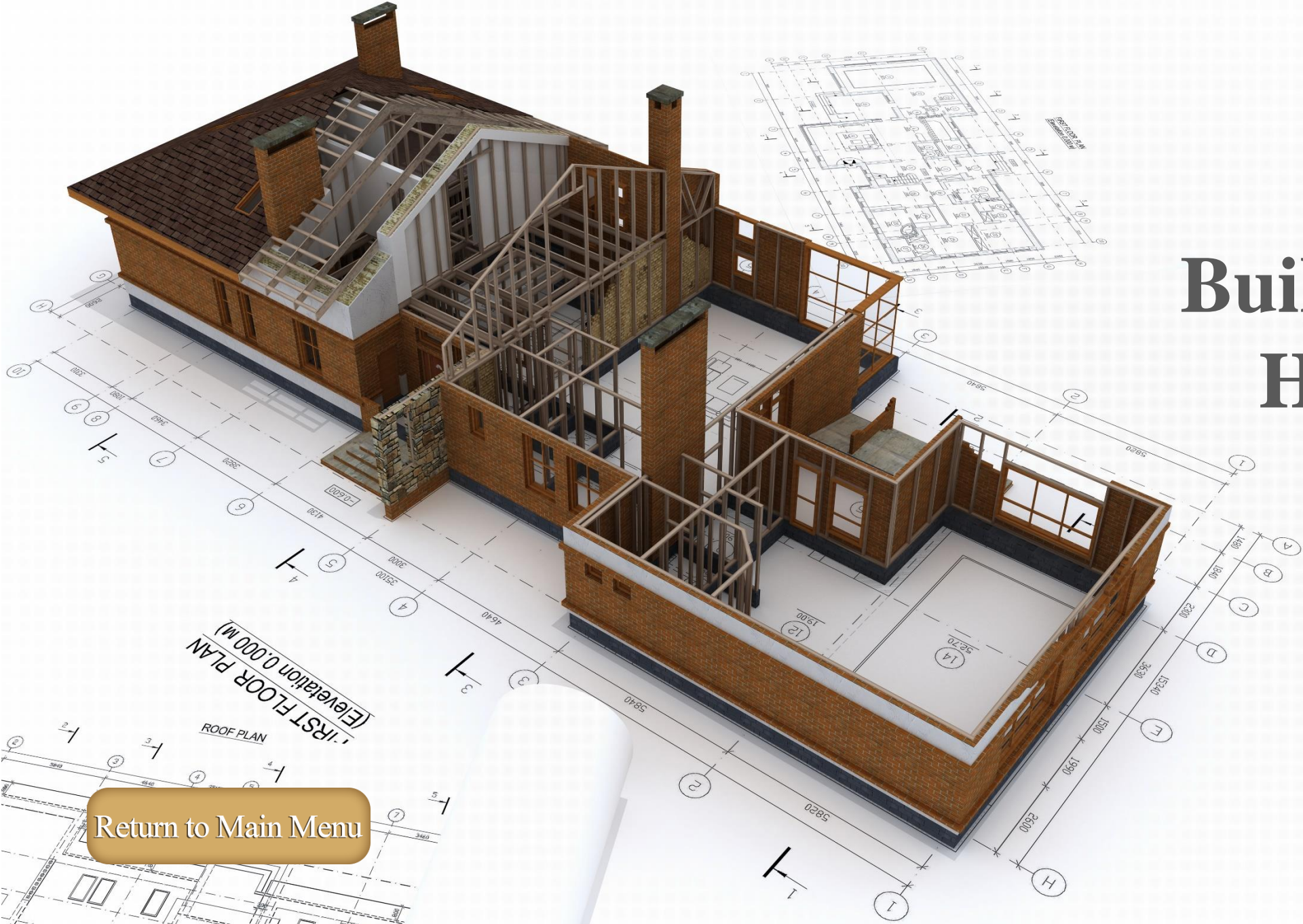




[Return to Main Menu](#)



Building and Housing



[Return to Main Menu](#)

Industrial,
educational and
sanitary licenses

13



Issued
commercial
licenses

238



Residential and
workshop
licenses

241



*Residential
licenses*

2872



The average price of one square meter of land on the residential buildings: **4312** thousand Rials

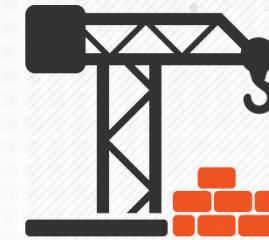
average price of one square meter substructure of residential units: **12971** thousand Rials

average monthly rental rent in contract concluded between the landlord and tenant, for per square meter substructure of residential unit: **73517** Rials

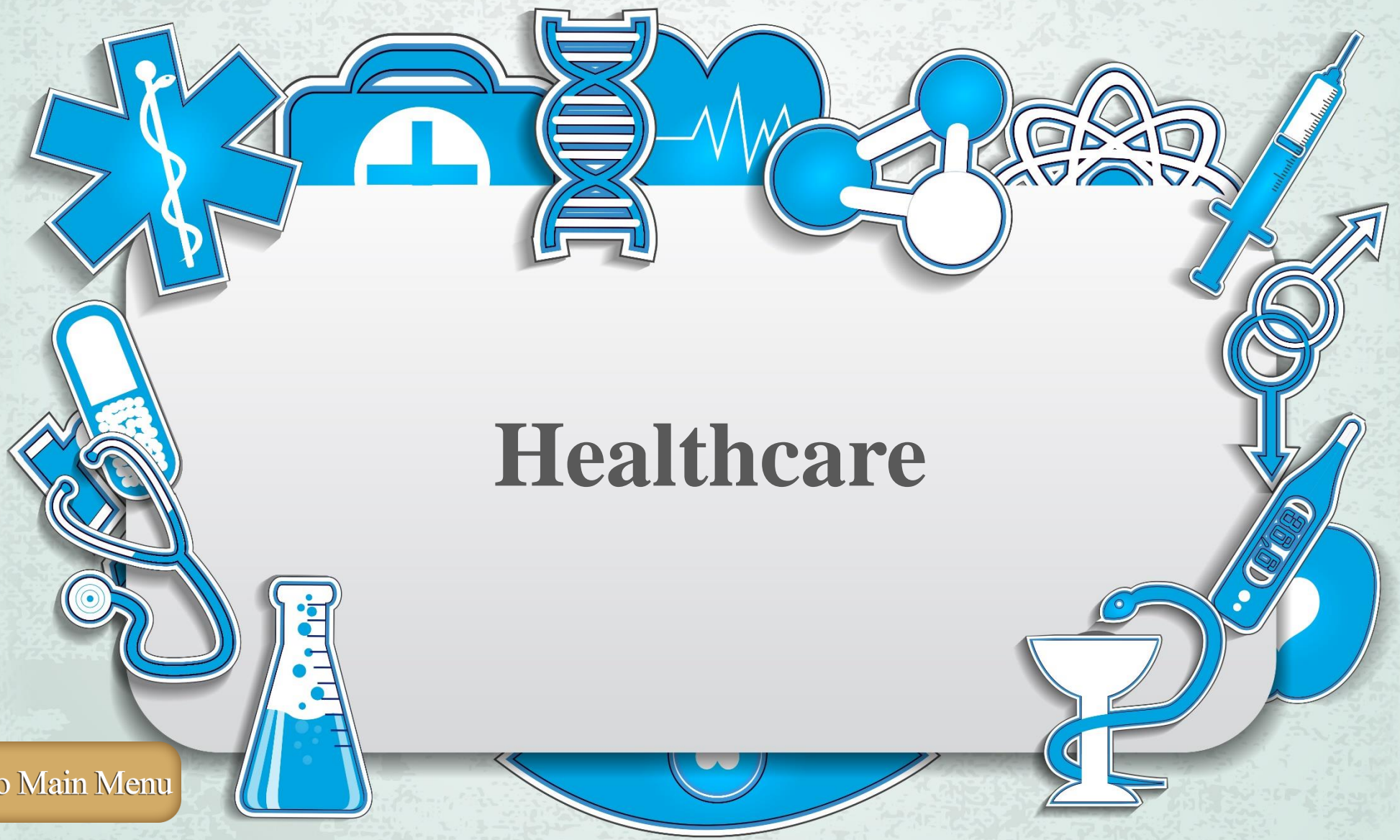
*Building permits
issued for
construction:
3368 items*

*837/4
thousand
square meters
(land area)*

*1520/8
thousand square
meters
(foundation area
of the floors)*

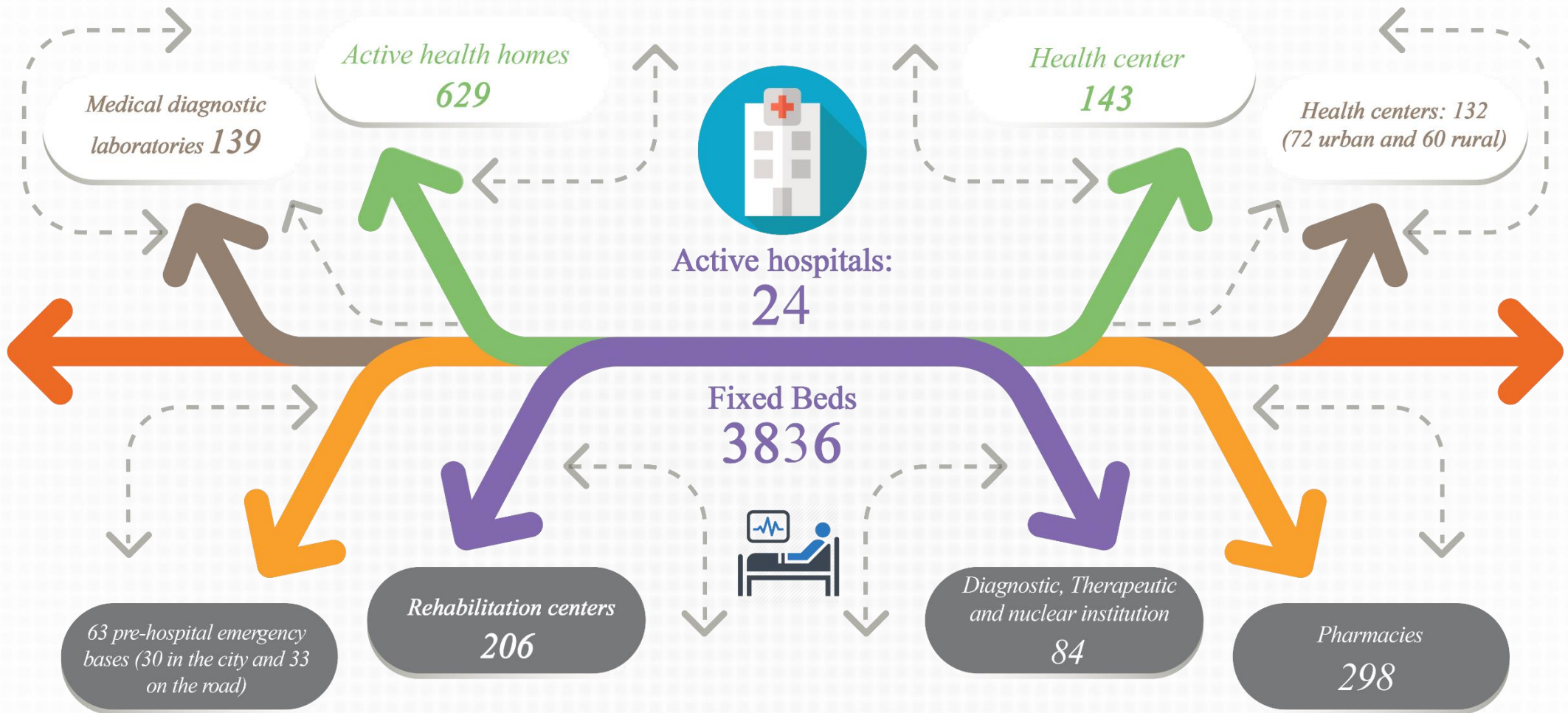


[Return to Main Menu](#)



Healthcare

[Return to Main Menu](#)



[Return to Main Menu](#)





Veterinary pharmacy: 54



Tentacle centers: 38



Veterinary clinic: 50



Hospital: 1



Veterinary laboratories: 5

[Return to Main Menu](#)



The number of governmental veterinary staff
202



The number of nongovernmental veterinary staff
257



Tourism And Crafts



[Return to Main Menu](#)



The most **important attractions** of the province are:

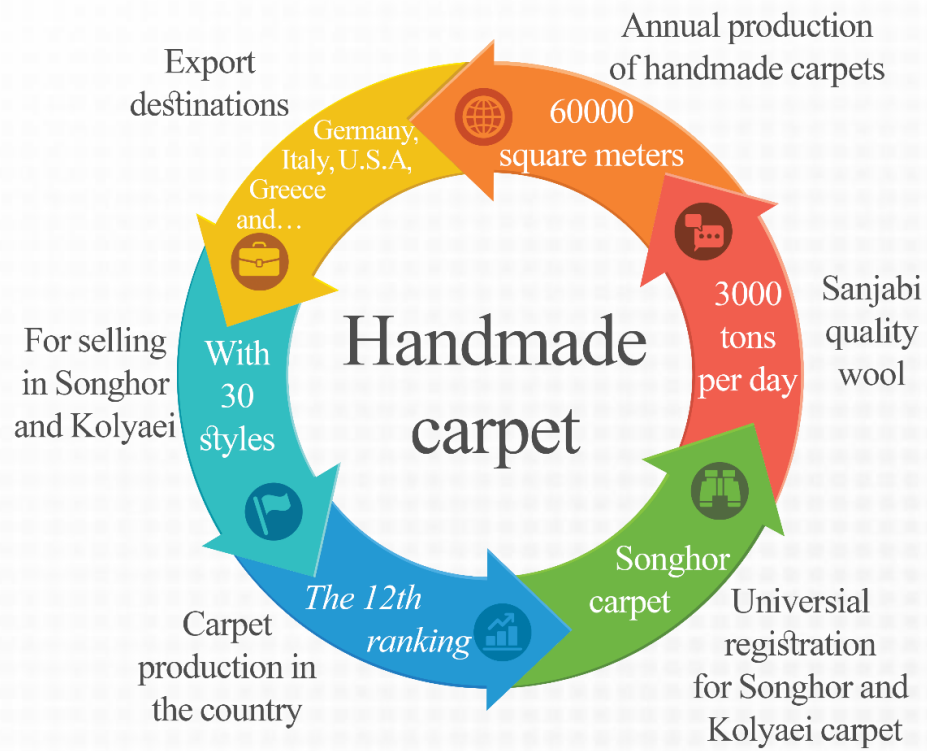
Tagh-e-bustan, Bisotun, traditional market, Jame mosque, Gur dakhmeh, historical Hill of Ganj Dare, Darius Inscription, Shah Abbasi Carvanserai, Anahita Temple, Niloofar Sarab, Sahneh Sarab, Rijab River, Yazdgerd Castle, Abu Dhajaneh Tomb, Quri Qalah Cave, Ravansar Sarab, Rijab waterfall, Hajij village, shamshir village, Bazi Deraz Mount, Goor Dakhmeh Direh

Tekiyeh Moaven ol Molk, Tagh-e-bustan, Complex of Sasani Ghasr Shirin, Ghor Ghaleh Cave, Gowdin hills, complex of Yazdgerd castle, Cultural perspective of owramanat, Temple of Anahita, par ow cave **are in the world temporary list.**

5th
terms of country attraction
ranking

[Return to Main Menu](#)





The most important handicraft products in Kermanshah province: Carpets, rugs, traditional instruments, Jajim weaving, sculpture and metal tools, mosaic, woodworks, leather artifacts and local jewelry, metalworking, traditional sewing, Embossed flower rugs, pottery, traditional designing, basket waving, textile, glass cutting, traditional dyeing, carpet designing, illumination miniature, woodturning and ...



[Return to Main Menu](#)





Industrial Settlements

[Return to Main Menu](#)



*23 settlements
and active industrial
zones*
*(21 governmental industrial area
and towns and 2 non-governmental
industrial towns)*

The total
amount of the land
available to the
industrial
settlements and
areas is more than
2400
hectares



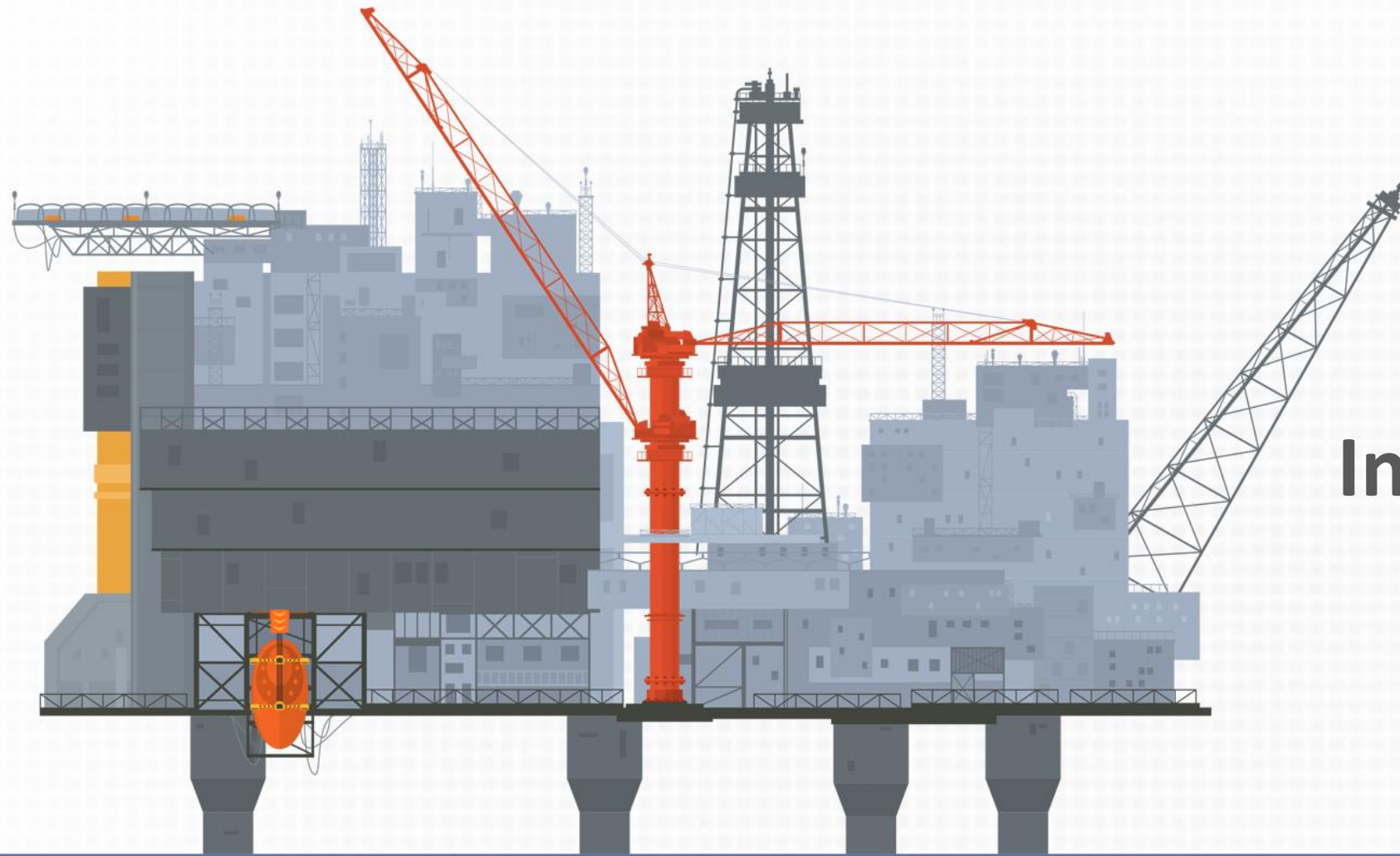
*Average
distance
approximately
5 km to town
center*

It has infrastructure facilities
,such as: water, electricity
telephone and gas, and is ready
to accept investors in the
geographical area of the
province



[Return to Main Menu](#)





Infrastructures

[Return to Main Menu](#)



Being on the road of Atabat-e-Aliat



523 km Main route



417 km Motorway

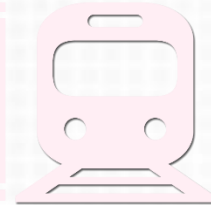



2831 km the length of communication routes



The international airport of Shahid Ashrafi Esfahani, the Hub in the west of Iran and with a capacity of 120 weekly flights

The length of the main railway lines is 457.5 km with 3 stations

Kermanshah refinery
Bisotun powerhouse
oil and gas reserves



HOTEL
★★★★★ Hotel numbers
27



Amount of net cargo transported
15559 tone



Number of passengers commuted
272767

Return to Main Menu





Industry

[Return to Main Menu](#)

Investment in industrial workshop
with issued operating licenses
26362 Billion Rials



The most important industrial
projects in the province:

150,000 barrel refinery plan,
polypropylene production plan,
petrochemical development plan
with urea and ammonia fertilizer;
iron melting, 2-piece aluminum
can, bioethanol, corn oil, bone
bio implant, calcium carbonate
paper design

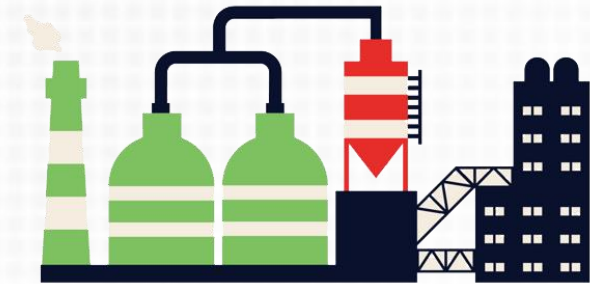
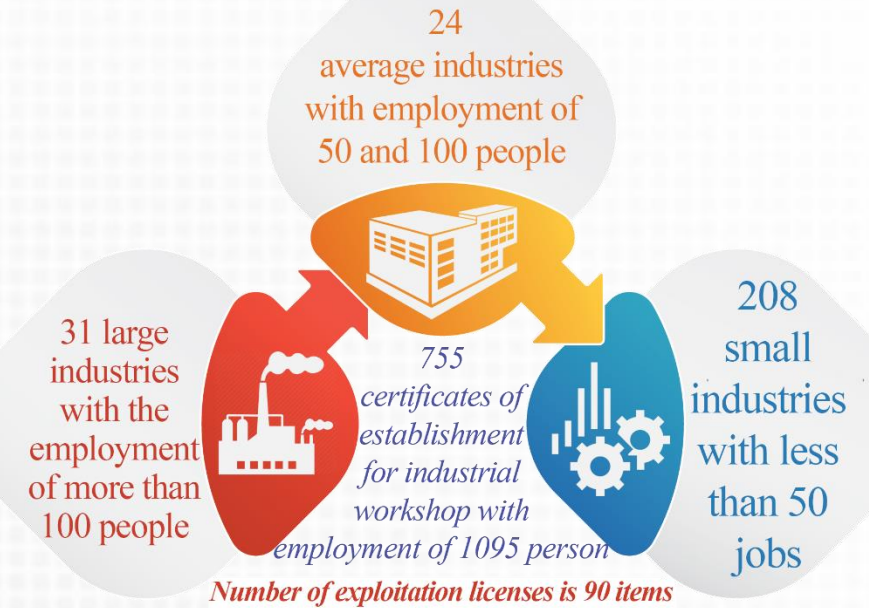


Due to the strategic situation and the
cooperation with the **Iraq** state, this
province has the best investment
situation in producing industrial
products and exports to Iraq and other
countries



[Return to Main Menu](#)

The most important industrial units production units of autos, cement, ceramic tiles, dairies, rebar and beam, Edible oils, printing, packaging and carton making industries, flour industries, canning and tomato paste



3 petrochemical units are in operation and production

The fourth petrochemical plan, in special economic areas of Islamabad-e-Gharb, and the Kermanshah petrochemical development plan are in progress.



Important units of manufacturing and industrial products

- ❖ 4 units for the production of multilayer plastic bags with the capacity of 40 thousand tons
- ❖ 12 unit of steel skeletons for the construction of 125,000 tons
- ❖ 1 unit of prefabricated building components and ... with a capacity of 1.5 million tons
- ❖ 3 liqueur processing units with a capacity of 5000 tons
- ❖ 1 unit of processing plants of medicinal plants with a capacity of 1200 tons
- ❖ 40 units of automotive parts production including: (3 units of plastic products – 26 units of metal parts – 2 units of automotive electronics – 4 units of automobile filters – 1 unit of battery production – 4 units of automobile)
- ❖ 1 unit of production of precisions industrial parts (casting) with a capacity of 700 tons
- ❖ 1 production unit of municipal services machinery with a capacity of 3400 units
- ❖ 2 units for a production of the box with a capacity of 600 thousands units
- ❖ 1 unit of production of a car chassis with a capacity of 80 thousand units
- ❖ 7 livestock and poultry slaughterhouses with a capacity of 340 tons per day

[Return to Main Menu](#)

- ❖ 3 operating petrochemical plants, with production of one million tons per year (urea and ammonia- alkyl linear gasoline – heavy polyethylene) (production of heavy polyethylene: 300 thousand tons – production of linear gasoline 50 thousand tons- production of urea and ammonia fertilizer: 660 thousand tons)
- ❖ 1 unit of automobile production with a capacity of 50 thousand units in the first phase
- ❖ 2 units of cement production capacity of 3.6 million tons
- ❖ 3 ceramic tile production units with a capacity of 24.5 million tons
- ❖ 3 units for the production of rebar and beam with a capacity of 600 thousand tons
- ❖ 1 unit of production of Ferro-manganese with a capacity of 5 thousand tons
- ❖ 3 tomato paste production units with a capacity of 60 thousand tons
- ❖ 1 unit of vegetable oil production capacity of 300 thousand tons
- ❖ 2 sugar production units of sugar beet with a capacity of 120 thousand tons
- ❖ 16 units of dairy products with a capacity of 460 thousand tons
- ❖ 2 units for the production of a variety of drugs with a capacity of 340 million units of medicine and 200 thousand tons of drug raw materials
- ❖ 1 unit for the production of pesticides with a capacity of 3 thousand tons
- ❖ 16 units of flour production capacity of 600 thousand tons
- ❖ 19 units of livestock and poultry production with a capacity of one million tons
- ❖ 33 block units with a capacity of 650 thousand square meters
- ❖ 5 units for the production of gypsum construction with a capacity of 675 thousand tons
- ❖ 1 unit production of all types of fabric with a capacity of 10 million square meters
- ❖ 2 glassmaking units
- ❖ 1 can making unit





*Major operational and
under construction industrial
designs*

- ❖ Construction of 150 thousand barrel refinery per day to produce gasoline, diesel oil and ... with a capacity of 3 million tons
- ❖ **In the course of construction of 1 plan for petrochemicals to produce heavy polyethylene and polypropylene capacity of 735 thousand tons**
- ❖ Kermanshah's Petrochemical Development plan is under construction to produce 660 tons of urea and ammonia
- ❖ **At the beginning of the construction of an industrial plan to produce Bioethanol with a capacity of 76 thousand tons**
- ❖ In the construction of two industrial designs for the production of 50,000 tons of Ferrocylsium
- ❖ **In the course of the construction of two industrial designs for the production of light steel ingot 300 tons**
- ❖ At the beginning of the construction of an industrial plan for the production of crude corn maize with a capacity of 182 thousand tons
- ❖ **At the beginning of the construction of an industrial plan for industrial European production of bread in 9 thousand tons**
- ❖ At the beginning of the construction of an industrial plan for the production of bone marrow bio membranes with a capacity of 300 thousand hands
- ❖ **The construction of an industrial design for the production of paper from calcium carbonate with a capacity of 7,500 tons**

[Return to Main Menu](#)



Trade And Commerce



[Return to Main Menu](#)



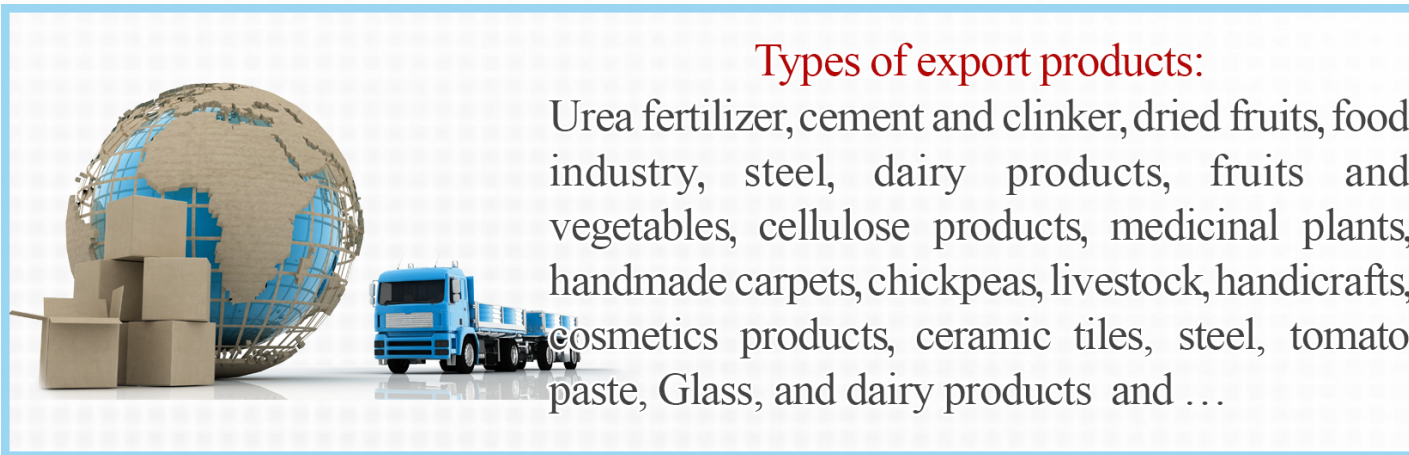
371

km
joint border
with Iraq



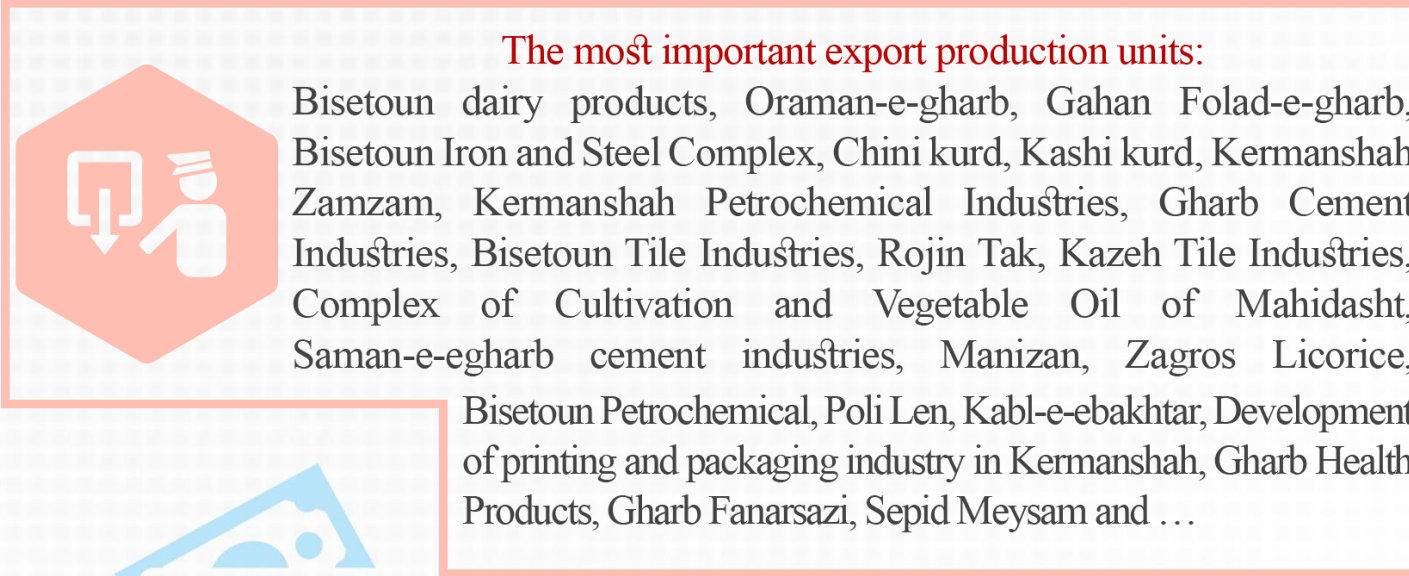
Neighboring Iraq,
provides the fields
of exchanging
goods, services and
tourists, and also,
transferring technical
knowledge for
Kermanshah
province

[Return to Main Menu](#)



Types of export products:

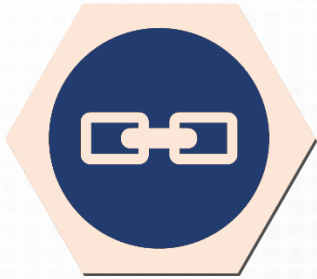
Urea fertilizer, cement and clinker, dried fruits, food industry, steel, dairy products, fruits and vegetables, cellulose products, medicinal plants, handmade carpets, chickpeas, livestock, handicrafts, cosmetics products, ceramic tiles, steel, tomato paste, Glass, and dairy products and ...



The most important export production units:

Bisetoun dairy products, Oraman-e-gharb, Gahan Folad-e-gharb, Bisetoun Iron and Steel Complex, Chini kurd, Kashi kurd, Kermanshah Zamzam, Kermanshah Petrochemical Industries, Gharb Cement Industries, Bisetoun Tile Industries, Rojin Tak, Kazeh Tile Industries, Complex of Cultivation and Vegetable Oil of Mahidasht, Saman-e-egharb cement industries, Manizan, Zagros Licorice, Bisetoun Petrochemical, Poli Len, Kabl-e-ebakhtar, Development of printing and packaging industry in Kermanshah, Gharb Health Products, Gharb Fanarsazi, Sepid Meysam and ...





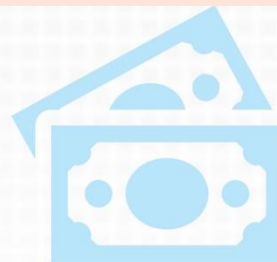
Especial economic zone
Islamabad-e-gharb



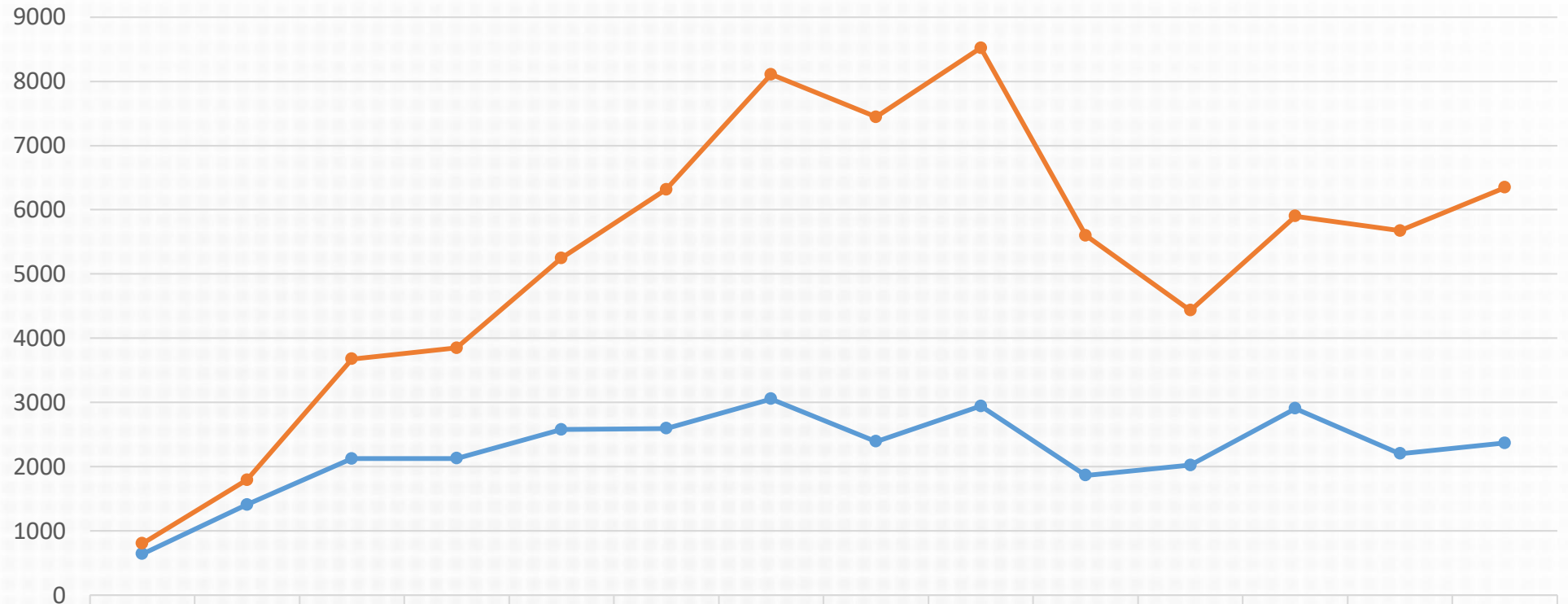
Qasr Shirin
Free Trade Zone



[Return to Main Menu](#)



Ten years performance of the Foreign Trade Department of the province during 2007 – 2021



	2007-2008	2008-2009	2009-2010	2010-2011	2011-2012	2012-2013	2013-2014	2014-2015	2015-2016	2016-2017	2107-2018	2018-2019	2019-2020	2020-2021
Value (million dollars)	640	1406	2125	2128	2578	2595	3052	2390	2942	1863	2023	2904	2201	2368
Weight (thousand tons)	801	1791	3676	3849	5246	6315	8107	7446	8518	5599	4433	5900	5673	6345

[Return to Main Menu](#)





Investment Opportunities

[Return to Main Menu](#)

Investment Opportunities in Mine and Industry

Row	Title of the Project	Annual Capacity	Capital Estimation (Euro)	Place of the Project (County)
1	Converting Gas Into Polypropylene GTPP	265 Million Tons	1210	Sonqor
2	Solar Panel made up of Silicon Metal- Wiper and Solar Panel	3,000 Tons	477.9	Kermanshah
3	Melamine Crystal	3,000 Tons	48.9	Harsin
4	Seamless Pipes(Mannesmann)	300,000 Tons	224.4	Sarpol-e Zahab
5	Ferro-Alloys with the Priority of Ferrosilicon Manganese	50,000 Tons	35.5	Harsin
6	Magnesium Ingot	50,000 Tons	46.7	Eslamabad-e Gharb
7	Detergent Powder and Sulfuric Acid	102,000 Tons	20	Harsin
8	Modern Stonecutting	1,000,000 M ²	12.3	Harsin
9	Flute Glass	180,000 Tons	62.2	Kangavar
10	Manganese Sulfate	10,000 Tons	5.1	Harsin
11	Autoclaved Cellular Reinforced Concrete Blocks and Panels	285,000 M ³	16.8	Salas-e Babajani
12	Sugar Factory	4,000 Tons/Day	68.9	Kangavar
13	Sulfur Coated Urea Fertilizer	100,000 Tons	17.8	Harsin
14	Ferrosilicon	50,000 Tons	24.4	Ravansar
15	Polyethylene Pipe and Fittings	30,000 Tons	8.9	Sarpol-e Zahab
16	Gypsum Panels	1.5 Million M ²	2.5	Qasr-e Shirin
17	CV Joint	300,000	14.4	Kermanshah
18	Producing Airbags	400,000	3.3	Sahneh



[Return to Main Menu](#)





Investment opportunities in agriculture section

Item	Project title	Capacity	Project implementation site
1	Modern gardens' expansion	250,000 MT	Kermanshah Province – tropical regions lands
2	Integrated (dates and citrus) gardens expansion	50,000 MT	Kermanshah Province – tropical regions lands
3	Gardens expansion in steep lands	2,000 MT	Kermanshah Province – temperate and cold regions lands
4	Saffron culture expansion	16 MT	Kermanshah Province – – temperate and cold regions lands
5	Medicinal plants culture expansion	10,000 MT	Kermanshah Province – statewide
6	Greenhouse products culture expansion	300,000 MT	Kermanshah Province – tropical regions lands
7	Lentic farming project implementation in Azadi Dam downstream through private- public participation -	250 MT per year	Dalahoo County, Azadi Dam downstream
8	Lentic farming project implementation in Jamishan Dam downstream through private- public participation -	150 MT per year	Songhor County, Jamishan Dam downstream
9	Lentic farming project implementation in Zamkan Dam downstream through private- public participation -	100 MT per year	Dalahoo County, Zamkan Dam downstream
10	Sugar production from beetroot	1,170 MT	Kermanshah- Sarpol Zahab- Islamabad Gharb- Kangavar
11	Pea processing	10,000 MT	Kermanshah- Ravansar- Islamabad- Dalahoo
12	Tomato juice and paste	400,000 MT	Kermanshah- Doroud Faraman
13	Potato processing	15,000 MT	Kermanshah- Sarpol Zahab
14	Olive packing and processing	3,000 MT	Dalahoo
15	Saffron packing and processing	5 MT	Kermanshah
16	Malt and non-alcoholic beer production from barley	5,000 MT	Islamabad Gharb
17	Poultry line 2 slaughterhouse	4,000 pieces per hour	Kermanshah - Dalahoo
18	Livestock industrial slaughterhouse	4,000 pieces per hour	Kermanshah – Javanrood, Songhor
19	Dalahoo Vileh Bionij Livestock Town	14,400 heads	Kermanshah- Dalahoo- Vileh Bionij Village of Dalahoo
20	75,000-heads lamb fattening	75,000 heads	Kermanshah – Dalahoo- Solas- Islamabad Gharb- Songhor
21	Kurd race horse farming complex	300 heads of thoroughbred horses	Kermanshah
22	Lactating cows complex	2,000 heads	Kermanshah- Sahneh- Chenarshooh Village
23	10,000-head calf fattening	3,600 MT beef	Kermanshah- Kangavar- Ravansar- Songhor- Sahneh
24	10,000-head lactating cows	10,000 heads	Kermanshah- Sahneh- Islamabad Gharb- Harsin- Songhor
25	11,000-head productive light-weight livestock farming	11,000 MT milk- 20,000 heads of lamb	Kermanshah

[Return to Main Menu](#)





[Return to Main Menu](#)

Investment opportunities in services section

Item	Project title	Capacity	Project implementation site
1	Solar power plant	10 Megawatt	Islamabad Gharb
2	Solar power plant	20 Megawatt	Kermanshah
3	Solar power plant	25 Megawatt	Kermanshah
4	Bisotoon Reservoir Dam and transmission system	40,000,000 m ³	Kermanshah- Bisotoon
5	Drainage and irrigation main network and transmission system of Kabootar Laneh Dam	32.2 million m ³	Kangavar
6	Gavshan Water Power Plant	11.02 Giga watt hour energy per year	Sanandaj- Kamyaran
7	Water transmission system from Azadi Dam to Islamabad Gharb City	17.1 million m ³	Islamabad Gharb
8	Kermanshah- Khosravi Highway establishment	-	Between Kermanshah- Khosravi Highway
9	Ghazanchi- Ravansar- Paveh- Nosood- Sheikh Saleh Highway establishment	-	Kermanshah
10	Kermanshah intra-urban train station complexes	-	Kermanshah
11	Kermanshah Water Park	120,000 persons per year	Kermanshah
12	Sarab Ghanbar Tourist – Creational Complex	-	Kermanshah
13	Taghbostan Telecabin Tourist – Creational Complex	-	Kermanshah
14	Shirin Hotel	200,000 persons per year	Kermanshah
15	Pol Velayat Game City	-	Kermanshah
16	Western Iran International Trade Center	-	Kermanshah
17	City's Great Hall and Art and Culture International Center	-	Kermanshah





The End