



# Chiapas Strategic Projects

# About Chiapas

Chiapas is located in the south of the country; 95% of the trade with Central America takes place in our border crossing.

STATE POPULATION

**5,803,144**  
PEOPLE



PRIMARY SECTOR



EAP

**2,230,042**  
PEOPLE



SECONDARY SECTOR



EAEP

**2,217,149**  
PEOPLE



TERTIARY SECTOR



- Surface area: **74,415 km<sup>2</sup>**
- Capital: **Tuxtla Gutiérrez**
- Municipalities: **124**



**GDP ESTATAL 2022**  
**368,789 MDP**  
**CHIAPAS CONTRIBUTES 1.5%**  
**22<sup>ND</sup> PLACE NATIONALLY**



20,398 MDP



51,735 MDP



196,041 MDP

- **IED ACUMULADO 2023:**  
**64,037,636 MDD**

Source: Secretaría de economía  
información 2t 2023

- **EMPLOYMENTS:**  
**264,505 NOV 2024**  
**AFFILIATED PERSONS**



- **ACCUMULATED SIX-YEAR EMPLOYMENT**  
**DIC 18-DIC 23 38, 838 NOV 2024**

Fuente: IMSS DIC 2023



## STRATEGIC INDUSTRIES OR SECTORS



**AGROINDUSTRY**



**TOURISM**

### POTENTIAL SECTORS



**INFORMATION  
TECHNOLOGY**



**LIGHT  
INDUSTRY**  
(AUTO PARTS)



**FORESTRY**



**RENEWABLE  
ENERGIES**



# PRODUCTIVE FACTORS

## WATER

30% OF THE COUNTRY'S SWEET WATER IS IN CHIAPAS

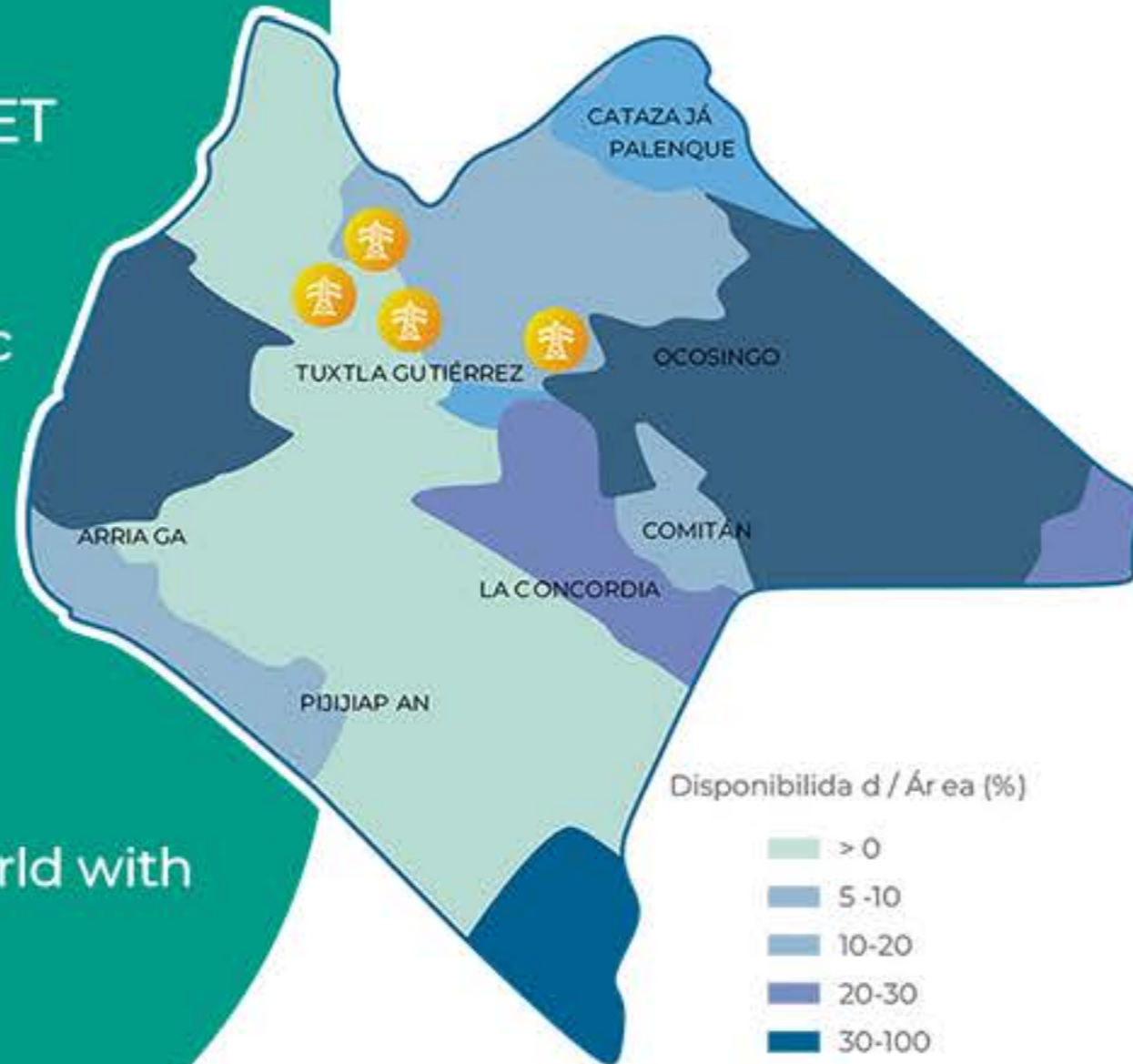
It has 2 basins and 74 hydrographic sub-basins.

It has the highest availability of surface water with

 **92 MIL HM<sup>3</sup>**

It is one of the 10 regions in the world with the largest groundwater reserves.

 **2.5 MIL HM<sup>3</sup>**



## ENERGY

The state has the largest hydroelectric reserve in the country.

**Chiapas produces 50% of the country's renewable energy (wind and hydroelectric).**

It has four large-capacity power plants:

- Peñitas,
- La Angostura
- Malpaso
- Chicoasén

with an installed capacity of

**4.800 MW**



## HUMAN TALENT

# CHIAPAS: 31,726 ANNUAL GRADUATED FROM A TOTAL OF 97 UNIVERSITIES



THE MAIN UNIVERSITIES GENERATE  
PROFESSIONALS AFFINED TO THE  
INDUSTRY IN THE STATE

**4,528 STUDENTS**

Education focused on Science, Technology, Engineering and  
Mathematics (STEM) fields



# LOGISTICS **INFRASTRUCTURE**





HUMANISMO QUE TRANSFORMA

# CHIAPAS

## IS INTEGRATED TO THE CORREDOR INTEROCEÁNICO DEL ISTMO DE TEHUANTEPEC

Logistics platform that promotes the integration of the ports of Coatzacoalcos, Veracruz, Salina Cruz, Oaxaca, Puerto Chiapas, Chiapas and interconnection through rail transport.

ISTMO DE TEHUANTEPEC INTEROCEANIC CORRIDOR  
227KM TOTAL

SALINA CRUZ

SALINA CRUZ PORT

COATZACOALCOS PORT

DOS BOCAS PORT

CHIAPAS

LÍNEA K: 472  
KM TOTAL

LÍNEA FA: 310  
KM TOTAL

Tuxtla Gutiérrez

Tapachula

CD. HIDALGO

CHIAPAS PORT

CONEXIÓN CON EL TREN MAYA



PORT INFRASTRUCTURE



RAILWAY INFRASTRUCTURE



AIR LOGISTIC HUB



ROAD INFRASTRUCTURE



**RAILWAY INFRASTRUCTURE**

**THROUGH THIS RAILWAY MODERNIZATION, WE ARE CONNECTING**

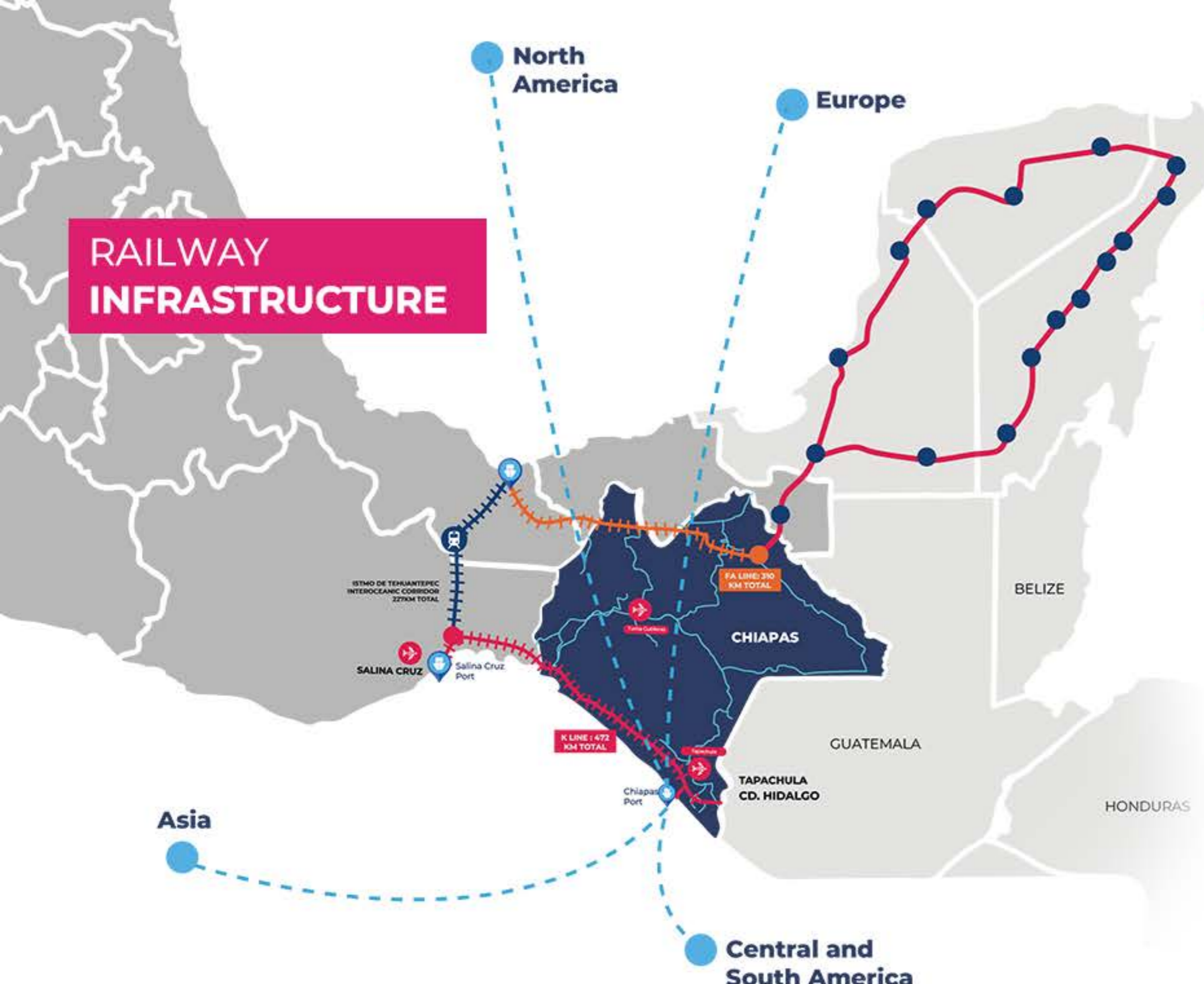
- From Puerto Chiapas to the Gulf of Mexico.
- To the center and north of the country and all North America.
- With the Mayan train to the southeast.
- Modernization of the Railway Infrastructure to CLASS 3 (Speed of 80 Km/hr for cargo and 95 Km/hr for passengers).



**FA LINE (COATZACOALCOS - PALENQUE) 310 KM TOTAL.**



**FROM IXTEPEC OAXACA - CD HIDALGO CHIAPAS 459KM LINE K13 KM LINE KA (CHIAPAS PORT CONNECTION) 472 KM TOTAL.**



Asia

North America

Europe

Central and South America

ISTMO DE TEHUANTEPEC INTEROCEANIC CORRIDOR 327KM TOTAL

SALINA CRUZ Salina Cruz Port

K LINE | 472 KM TOTAL

CHIAPAS

Chiapas Port

GUATEMALA

TAPACHULA CD. HIDALGO

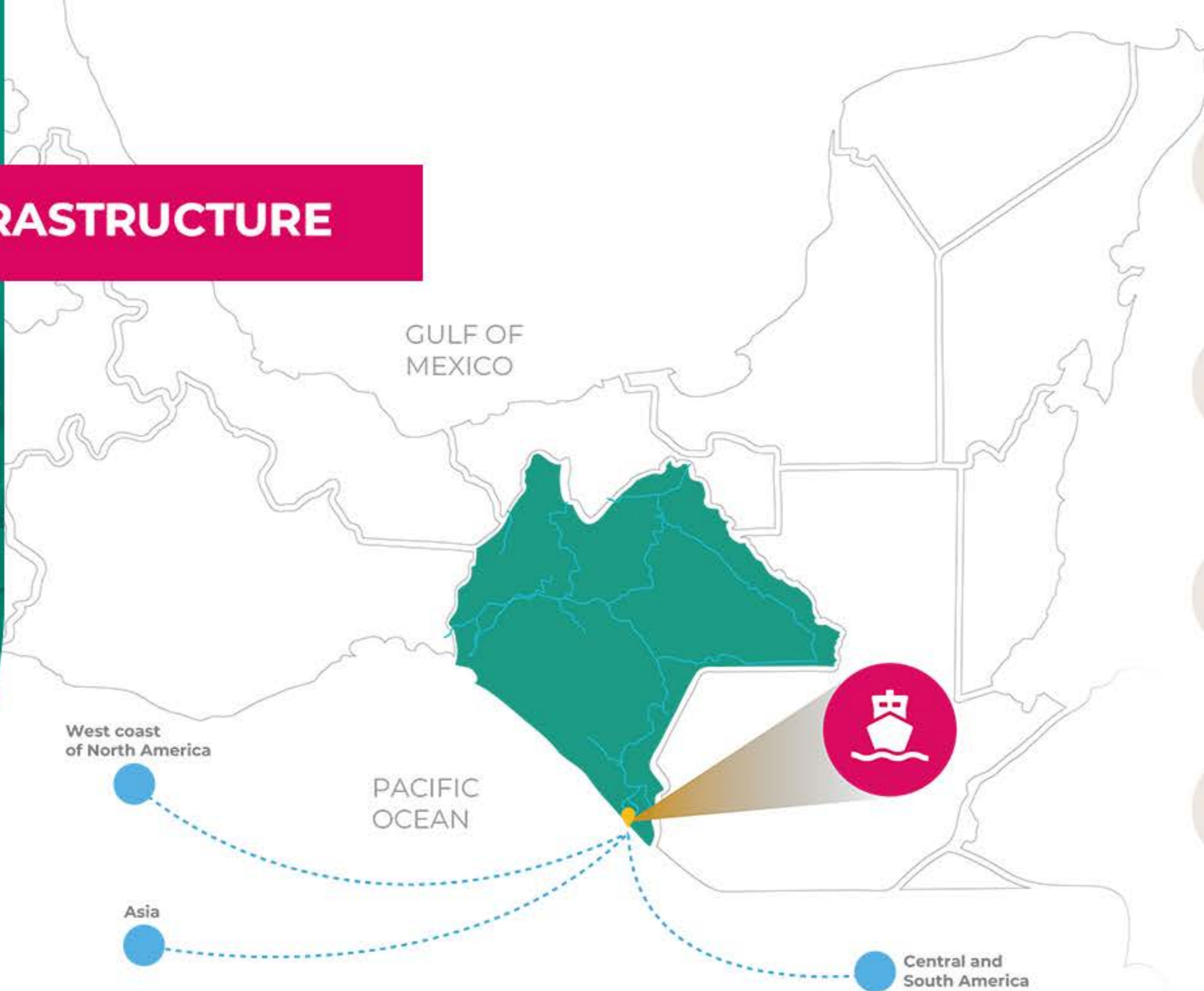
BELIZE

HONDURAS

FA LINE | 310 KM TOTAL



# PORT INFRASTRUCTURE



RAILROAD SPUR



TAPACHULA  
INTERNATIONAL  
AIRPORT



NAVIGATION CHANNEL  
WITH DEPTH  
OF 11 M/NM



TERMINALS  
-MULTIPLE USES  
-CONTAINERS  
-AGRICULTURAL  
-FISHING BULK



## AIR INFRASTRUCTURE

# CHIAPAS HAS 2 INTERNATIONAL AIRPORTS

ÁNGEL ALBINO CORZO INTERNATIONAL  
AIRPORT MOVED IN 2023:

**1,776 027** PEOPLE

TAPACHULA INTERNATIONAL  
AIRPORT MOVED IN 2023:

**550,260** PEOPLE



SECOND EXPANSION OF THE  
TERMINAL BUILDING  
(INTERNATIONAL AREA) TOTAL  
SERVICE CAPACITY:

**2 MILLION  
PASSENGERS**

COATZACOALCOS

TUXTLA GTZ.

SALINA  
CRUZ

TAPACHULA

PUERTO  
CHIAPAS

CD. HIDALGO





HUMANISMO QUE TRANSFORMA

AEROPUERTO INTERNACIONAL  
ÁNGEL ALBINO CORZO

## HANGAR AND AIR CARGO TERMINAL

Southern border logistics center



**IT IS THE TENTH AIRPORT IN THE COUNTRY TO HAVE AN AIR CARGO TERMINAL.**

The Angel Albino Corzo International Airport of Chiapas stands out for its cargo terminal and hangar, which has modern and efficient facilities that provide first class logistic capabilities for the transportation of national and international cargo.

**THE AIRPORT WILL HAVE:**

- 11,000 SQUARE METERS OF PLATFORM.
- 3,000 SQUARE METERS OF HANGARS.
- AREAS DEDICATED TO COMPANIES SPECIALIZED IN AIR CARGO.
- FISCAL STORAGE AREAS, AND A COLD CHAMBER WHERE ALL PRODUCTS REQUIRING CUSTOMS OR FISCAL PROCEDURES WILL BE HOUSED AND STORED.



The background of the image shows a complex industrial structure, possibly a refinery or chemical plant, with numerous pipes, walkways, and structural beams. The entire image is overlaid with a semi-transparent red filter. The text is centered in the middle of the image.

# INDUSTRIAL **INFRASTRUCTURE**





HUMANISMO QUE TRANSFORMA

## STRATEGIC FISCAL PRECINCT AREAS

# 10.9

## HAS AVAILABLE

BORDERING TO PUERTO CHIAPAS



10km  
TAPACHULA INTERNATIONAL AIRPORT



27 KM  
TAPACHULA



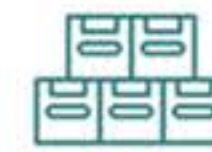
45km  
NEAR THE BORDER OF GUATEMALA



ADJOINING CUSTOMS SECTION



CONNECTION TO CONTAINER TERMINAL



95% OF GOODS FROM CENTRAL AMERICA PASS THROUGH THIS BORDER.



ELECTRIC POWER 250 KVA/HA



POTABLE WATER 1L/S/HA

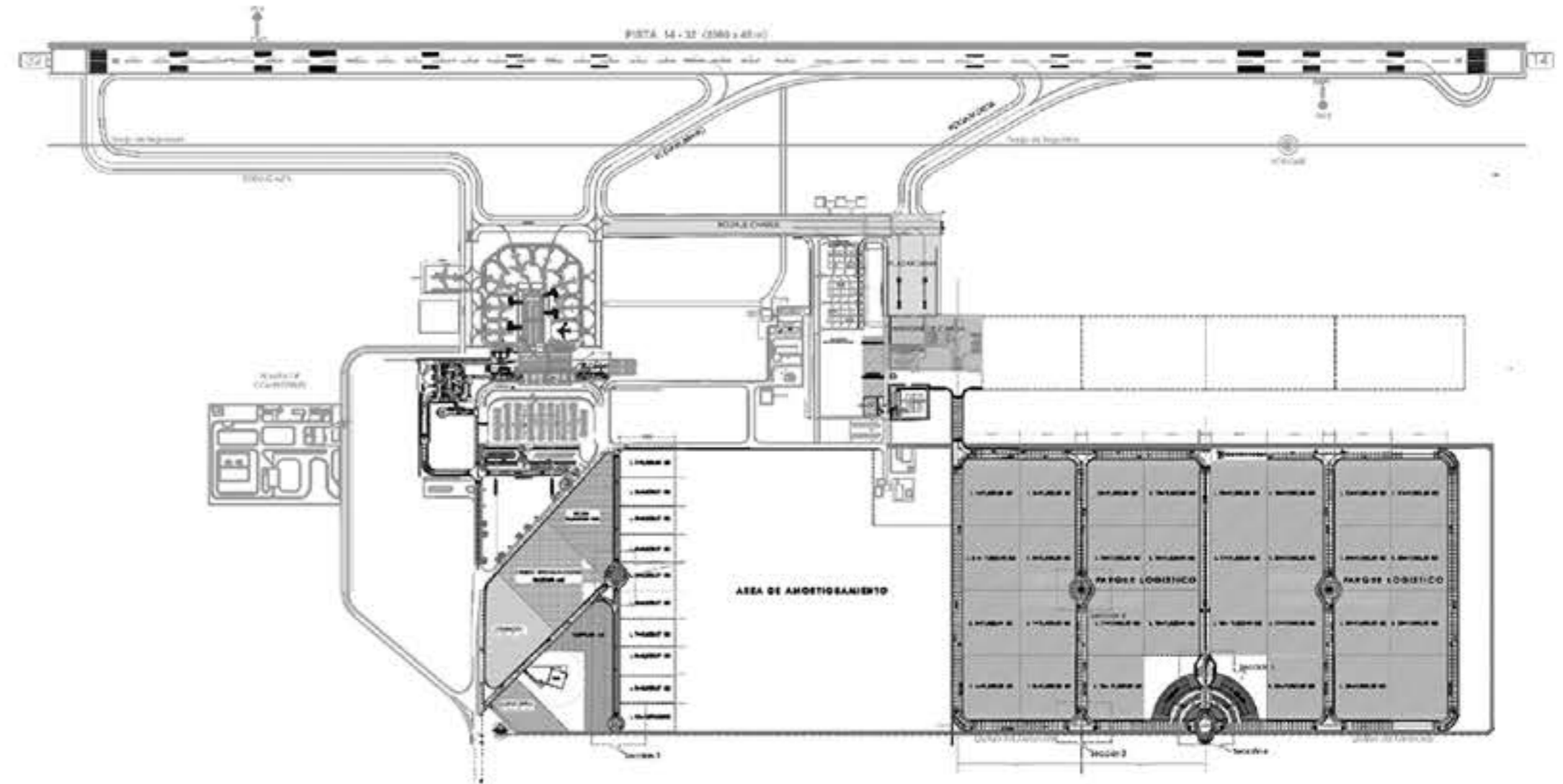


VOICE AND DATA SERVICE



## ÁNGEL ALBINO CORZO INTERNATIONAL AIRPORT LOGISTICS PARK

- Located inside Angel Albino Corzo International Airport.
- Development of 60 hectares
- It will have a Fiscalized Precinct
- 35km distance to Tuxtla Gutierrez





## CHIAPAS INDUSTRIAL PARK

### PRIVATE PROJECT OF GRUPO GA

Location: International Highway Mexico Tuxtla Km 13  
**Total area:** 17 hectares divided in 3 stages

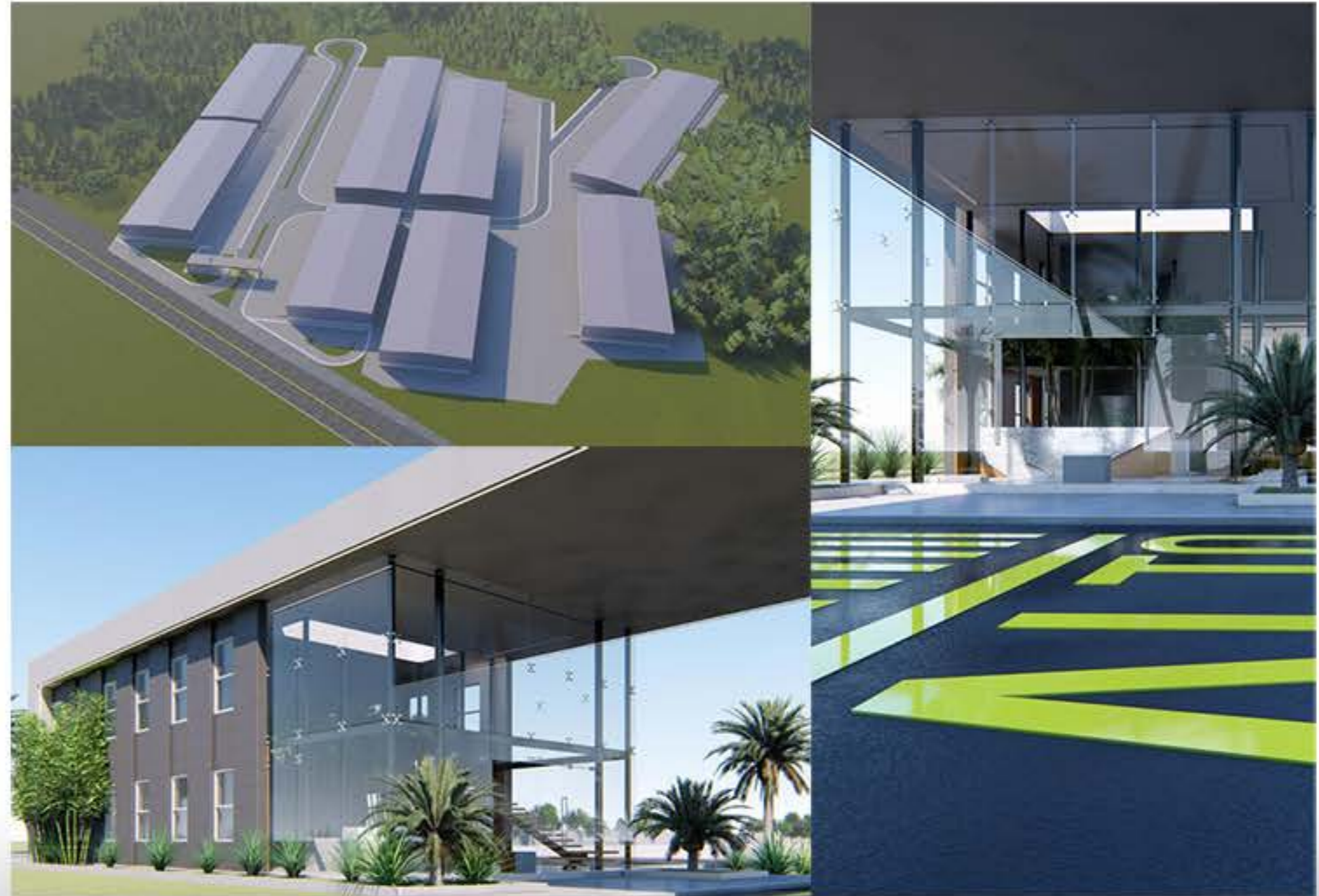
**First Stage:** 8 Lots from 3000 to 7500 m<sup>2</sup>

**Second Stage:** 6 Lots from 2000 to 7000 m<sup>2</sup>

**Third Stage:** 4 lots 3000 m<sup>2</sup>

Investment:

**20 MDD**





An aerial photograph of a large-scale construction project, possibly an airport terminal or a major commercial building. The image is heavily tinted with a red color. In the center, the text "STRATEGIC PROJECTS IN PROCESS" is written in bold, white, sans-serif capital letters. The construction site shows several large, rectangular buildings with complex roof structures. In the foreground, there are numerous wooden scaffolding structures and construction equipment, including what appears to be a large crane or conveyor system. The background shows a clear sky with some light clouds and distant hills or mountains.

# **STRATEGIC PROJECTS IN PROCESS**



# CHIAPAS PORT

**MODERNIZE AND PROMOTE PUERTO CHIAPAS AS A LOGISTICS PLATFORM AND DEVELOPMENT CENTER.**

**PROJECTS IN PROCESS 2024: 734MDP (FEDERAL GOVERNMENT)**

- Maintenance dredging 2024 in main channel and dock of Puerto Chiapas.
- Replacement of maritime defenses and updating of signaling systems.
- Extension of railroad tracks and railroad terminal
- Construction of operational building





# CHIAPAS PORT

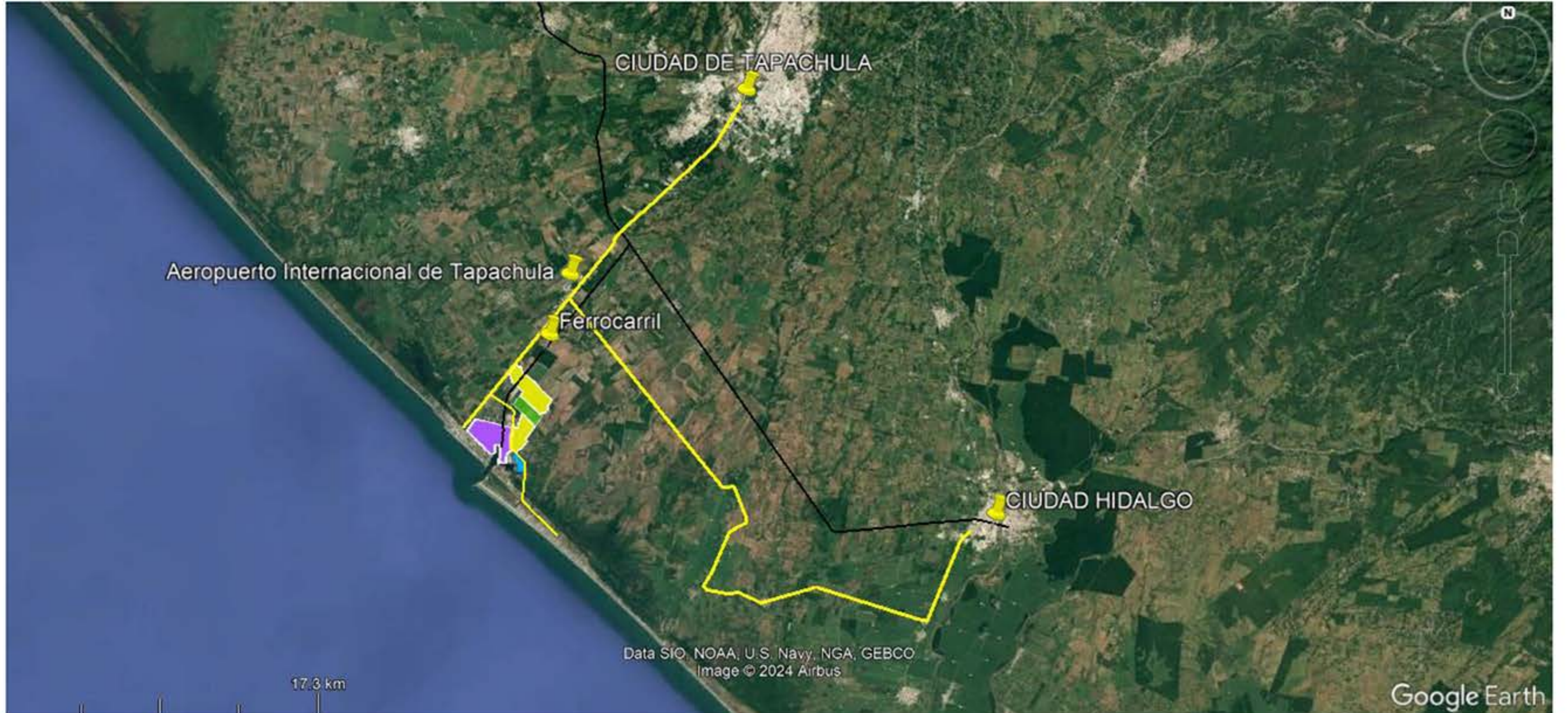
2025 PROJECTS: 1927.5 MDP  
(PENDING APPROVAL)

- Maritime works to resolve silt
- Construction of 750m dock lines
- Construction dredging for new projects
- Rehabilitation of longitudinal coastal protection





# DEVELOPMENT POLES IN TAPACHULA





# DEVELOPMENT POLES IN TAPACHULA



Ferrocarril



Data SIO, NOAA, U.S. Navy, NGA, GEBCO  
Image © 2024 Airbus

4.00 km



# DEVELOPMENT POLE **TAPACHULA I**



TAPACHULA  
**269.01 HAS**

**391,000**  
**INHABITANTS**

IN THE IMMEDIATE SURROUNDINGS

- Adjacent to the MEX - 225 highway (Tapachula - Puerto Madero) for 695 m.
- The railroad crosses the property for 800 m. The Tapachula International Airport is 5 km away.
- The International Airport of Tapachula is 5 km away, located 5 km from Puerto Chiapas.



# DEVELOPMENT POLE **TAPACHULA II**



TAPACHULA  
**149.71 HAS**

**391,000**  
**INHABITANTS**

IN THE IMMEDIATE SURROUNDINGS

- 1.7 km road frontage with the breakwaters branch road that connects with the MEX-225 highway.
- Close to the railroad, 500 m away.
- Adjacent to Puerto Chiapas
- Located 9.5 km from Tapachula International Airport.



## DEVELOPMENT POLES OF TAPACHULA

### STATUS:

- March 14, 2023, Chiapas was incorporated to the Inter-Oceanic Corridor of the Isthmus of Tehuantepec.
- October 16, 2024, contribution to the patrimony of the Inter-Oceanic Corridor of the Isthmus of Tehuantepec, of two properties for the Development Poles of Tapachula I and II.

### PENDING:

- The Declaration of Development Pole by the Federal Government in the Official Gazette of the Federation.
- Launching of International Bidding for developers of the two PODEBIS Poles in Tapachula.



## MODERNIZE THE STATE'S ROAD INFRASTRUCTURE

MODERNIZATION OF LOGISTICS WILL GIVE COMPETITIVE ADVANTAGE TO PRODUCTION AND TOURISM.

- OCOZOCOAUTLA OCOZOCOAUTLA HIGHWAY JUNCTION SOUTH OF TUXTLA GUTIERREZ
- OCOZOCOAUTLA BELTWAY
- OCOZOCOAUTLA-TUXTLA GUTIERREZ HIGHWAY
- TAPACHULA-TALISMAN (TUXTLA CHICO - TALISMAN JUNCTION)
- SAN CRISTÓBAL - COMITÁN
- BRANCH ROAD TO LA ANGOSTURA (AIRPORT JUNCTION - LA ANGOSTURA DAM)
- LA CONCORDIA AND RIZO DE ORO BRIDGES
- JARITAS-CIUDAD HIDALGO (MODERNIZATION)
- (PUJILTIC-TZIMOL)-LA CAMPANA (MODERNIZATION)
- CHIAPA DE CORZO RIVER CONNECTION (CONSTRUCTION)

**INVESTMENT 5,205 MDP**





# TAPACHULA INTERMODAL RAILWAY TERMINAL - ZAL CD. HIDALGO

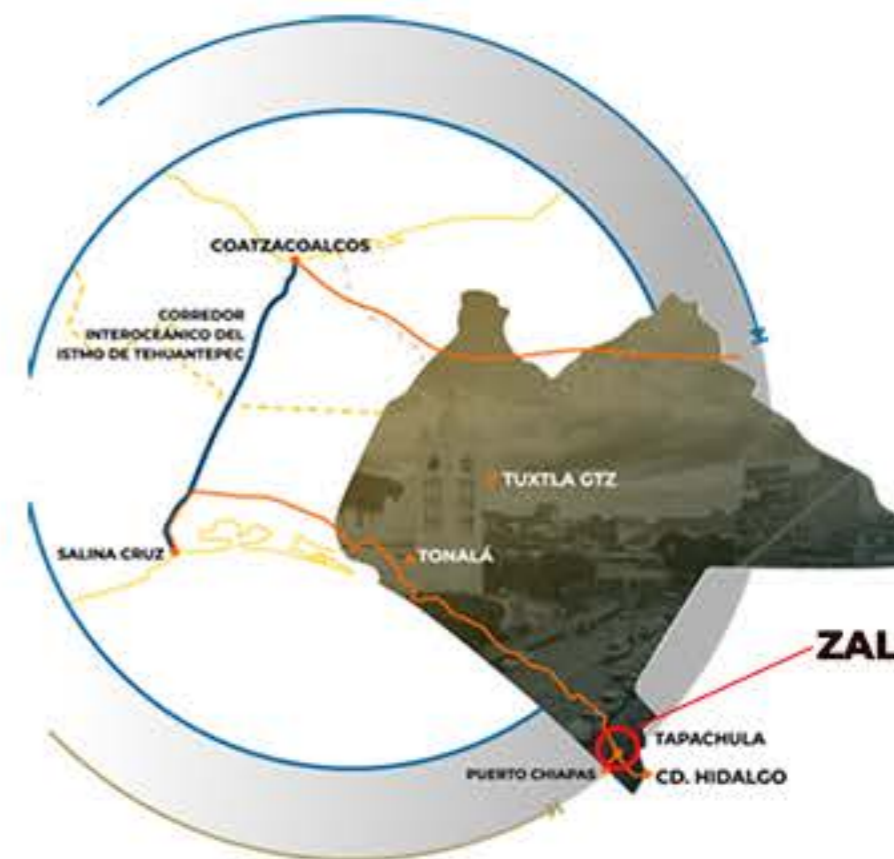


## ● USTDA (ZAL)

The State Government managed the pre-investment studies for the development of this terminal through the ustda.



## INVESTMENT 35MDD



Logistics platform that promotes the integration of the ports of Coatzacoalcos, Veracruz, Salina Cruz, Oaxaca, Puerto Chiapas, Chiapas and their interconnection through railroad transportation.



## LOGISTICS PROJECT

### PROJECT UNDERWAY BY ISTMO DE TEHUANTEPEC RAILWAY (IRT)

#### CIUDAD HIDALGO INTERMODAL RAILWAY TERMINAL

Platform for intermodal logistics operations between Puerto Chiapas and Ciudad Hidalgo that will modernize the current obsolete and saturated rail terminal.

It will make loading and unloading maneuvers efficient.

Reduce the cost of logistics supply chains.

Provide adequate and efficient infrastructure for rail transportation maneuvers on the border with Guatemala.

Increase the competitiveness of foreign trade activities at the border.



INVESTMENT  
**21MDD**

#### STUDIES WITH WHICH IT COUNTS

- Cost Benefit Analysis
- Soil mechanics study
- Environmental Impact Manifest Study
- Executive project



# LOGISTICS PROJECT

## OPPORTUNITY FOR DEVELOPERS **CIUDAD HIDALGO LOGISTICS CENTER**

Logistics Center to improve the efficiency, reliability and competitiveness of operations related to the movement of goods to the south of the country, especially products destined for foreign trade between Mexico and Central America.

- Modern basic infrastructure
- Urban redevelopment of Ciudad Hidalgo
- Will boost foreign trade with Central America
- Efficiency in loading and unloading maneuvers.
- Reduce the cost of logistics supply chains
- Increase the competitiveness of foreign trade activities at the border.

### STUDIES AVAILABLE

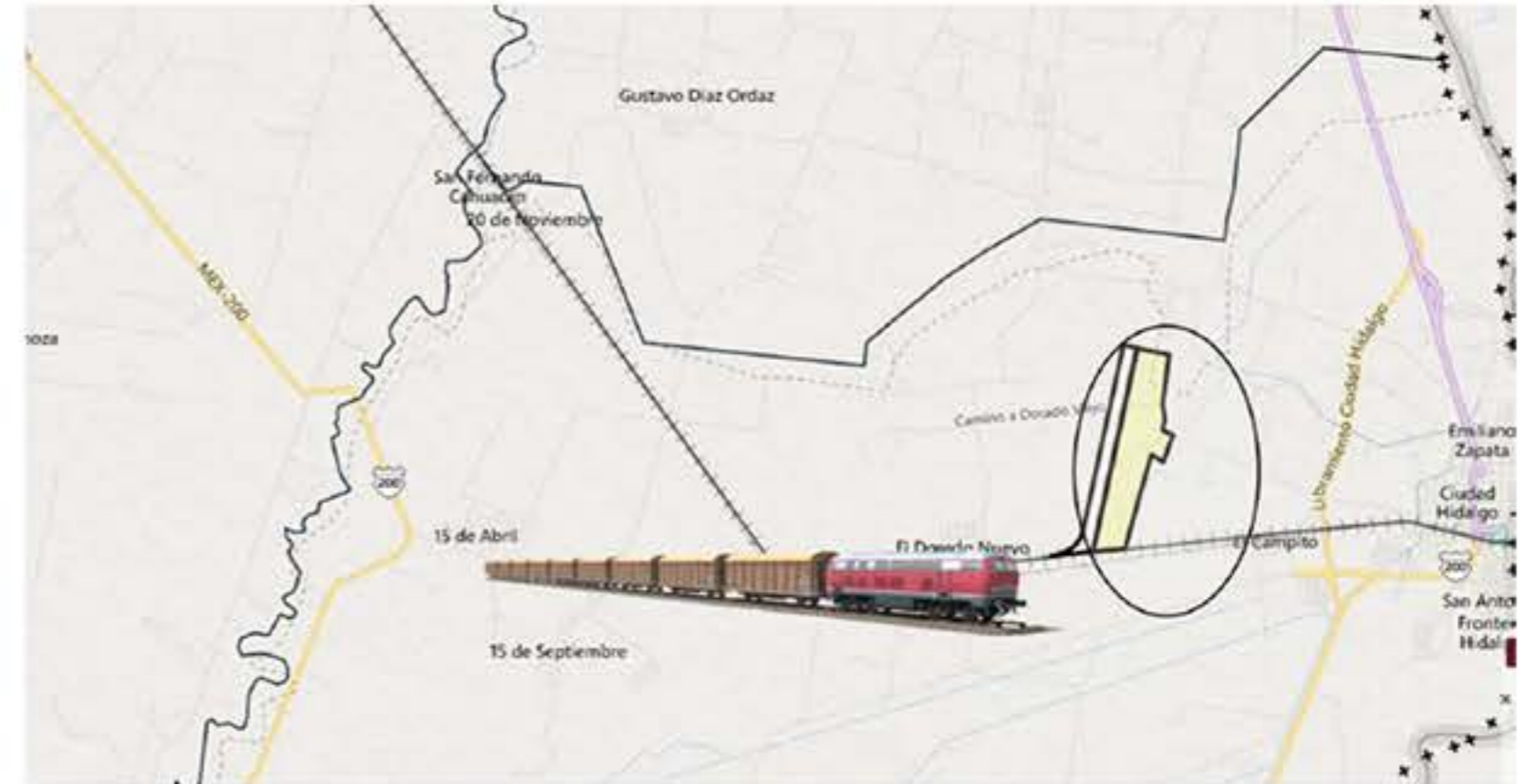
- Cost-benefit analysis
- Soil mechanics study
- Environmental Impact Manifest Study



### INVESTMENT

# 23MDD

(MILLIONS OF MEXICAN PESOS)





## LOGISTICS PROJECT

OPPORTUNITY FOR DEVELOPERS

### VEHICULAR TRAFFIC REGULATORY CENTER AT THE SUCHIATE II BORDER CROSSING IN CIUDAD HIDALGO

The Vehicular Traffic Regulatory Center will make the transit of goods and cargo vehicles using the Suchiate II border crossing efficient, reliable and safe and at lower costs, in order to support the growth of Mexico's foreign trade with Central American countries and the economy of Chiapas.

INVESTMENT  
**12.5 MDD**

#### STUDIES WITH WHICH IT COUNTS

- Cost Benefit Analysis
- Soil mechanics study
- Environmental Impact Manifest Study
- Executive project





# DEVELOPMENT OF THE LLANO SAN JUAN LOGISTICS PLATFORM, OCOZOCOAUTLA, CHIAPAS.

## OPPORTUNITY FOR DEVELOPERS

The most important logistic node of the Tuxtla Gutierrez Metropolitan Zone is located within a 20 km radius.





# DEVELOPMENT OF THE LLANO SAN JUAN LOGISTICS PLATFORM, OCOZOCOAUTLA, CHIAPAS.



## OPPORTUNITY FOR DEVELOPERS

Land available for the development of a Logistics Platform with an area of **211 hectares**, ideal for distribution centers, production platforms, warehouses, maneuvering yards and green areas, for logistics and industrial purposes.

INVESTMENT

# 25MDD





## PROCESA GROUP

### PRIVATE CO-INVESTMENT PROJECT FOR THE ESTABLISHMENT OF A U.S. TUNA COMPANY IN PUERTO CHIAPAS

Impact for Chiapas:

Investment: 3,000 MDP in 5 years.

Jobs: 4,000 New permanent jobs

Production: 800 to 1000 containers per month  
through the Istmo railroad.

Development of local and national suppliers





## PROCESA GROUP

### FISHING, PROCESSING AND MARKETING OF TUNA AND PET FOOD PRIVATE EXPANSION PROJECT

Investment: 580 MDP (Millions of mexican pesos)

Tuna plant expansion: 80MDPM

Acquisition of U.S. flag tuna boat: 240 MDP

Relocation and expansion of wet pet food plant:  
120 MDP

Construction of fishing pier: 140 MDP

